

DEKS

Rigshospitalet - Glostrup
Valdemar Hansens Vej 1-23
Opgang 8, 1.
2600 Glostrup
Danmark
☎ 3863 4400
www.deks.dk

Indberetningsperiode:

19.01.2024 – 05.02.2024

Programkoordinatorer:

Karin Heidemann
✉ karin.heidemann@deks.dk
☎ 3863 4416

Morten Pedersen

✉ Morten.pedersen@deks.dk
☎ 3863 4404

Denne rapport indeholder:

- Dette brev
- Individuelle resultater

Godkendt af MP

06.02.2024

Næste Indberetningsperiode:

20.02.2024 – 05.03.2024

2011 DK HK-serien, databehandling Runde 01/2024

Antal deltagere

Af de 40 laboratorier, der er tilmeldt programmet, har 28 laboratorier indberettet resultater.

Kontrolmaterialer

Denne rapport indeholder data fra følgende materialer:

- HK19 Biokemi
- HK19 F-Hæmoglobin
- HK19 Special
- HK20 HbA1c
- HK22 F-Hæmoglobin

Statistik

Tolkning af rapporter

Dokumentet, der beskriver, hvordan rapporten tolkes, kan ses her:

<https://deks.dk/produkter/information-om-deks-programmer/tolkning-af-rapporter/>

Tidligere resultater

Du kan se tidligere måneders middelværdier på indberettede komponenter:

<https://deks.dk/produkter/information-om-deks-programmer/hk-serien-databehandling-2011-dk/>

HK-materialer

HK22 Special har erstattet HK19 Special

HK19 Special erstattes af HK22 Special.

HK22 Special bestilles på produktnummer 2234 DK.

Koncentrationerne er omtrent de samme som i HK19 Special, bortset fra CRP, som i HK22 Special er ca. 3,5 mg/L.

Du kan læse pakningsvedlægget <https://deks.dk/laboratorier/pakningsvedlaeg/>.

HK23 Biokemi har erstattet HK19 Biokemi

HK19 Biokemi erstattes af HK23 Biokemi.

HK23 Biokemi bestilles på produktnummer 2237 DK

Du kan læse pakningsvedlægget <https://deks.dk/laboratorier/pakningsvedlaeg/>

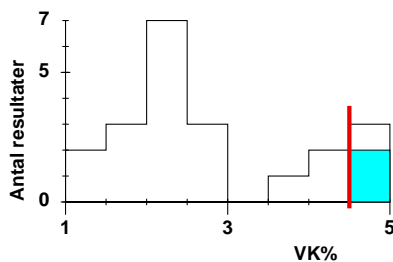
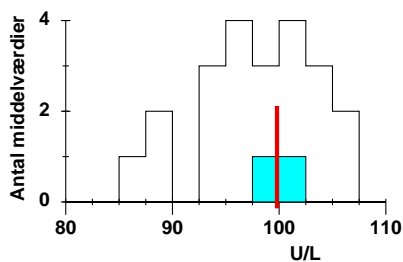
Databehandling af HK19 Special og HK19 Biokemi

I en overgangsperiode er det som ved tidligere materialeskift fortsat muligt at indberette resultater på (de gamle) Hk19 Special og HK19 Biokemi. Dette er både for at give mulighed for god indkøring af HK22 Special og HK23 Biokemi (de nye materialer), og for at man kan bruge mest muligt af sit gamle lager. Overgangsperioden varer så længe DEKS finder det relevant og afslutningen af den vil blive varslet i god tid.

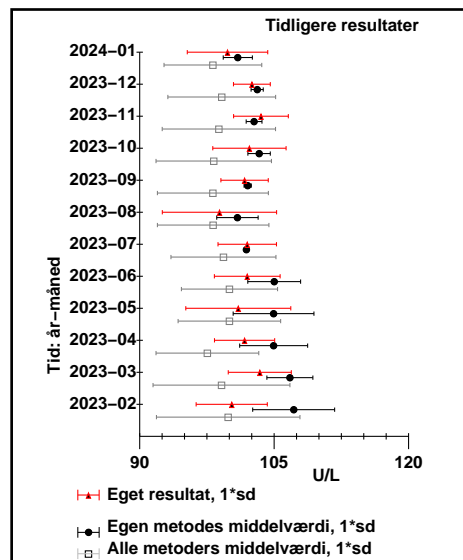
Med venlig hilsen

Karin Heidemann og Morten Pedersen

Alanintransaminase(ALAT); kat.k.; U/L egen metode: Fotometri

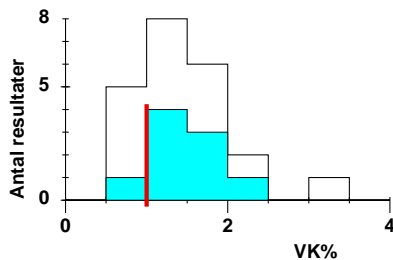
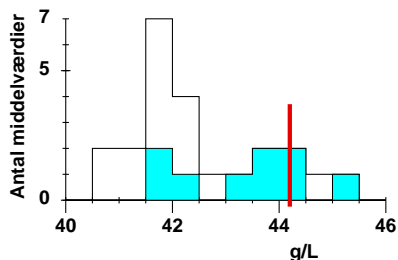


Metode	Gennemsnit	Standarddeviation	Antal lab.	egen middelværdi
Alle metoder:	98	5,5	22	99,8
Fotometri	101	1,6	2	4,5
P-5-P/NADH. Fotometri	96	6	9	31
IFCC (ECCLS)	101,7	1,9	6	
NADH. Fotometri	94	4	3	
P-5-P fotometri	94,7		1	
P-5-P/NADH	104,9		1	

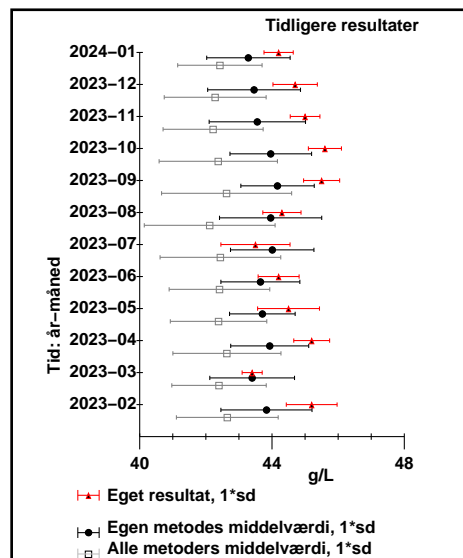


© DEKS 2024-01 1

Albumin; massek.; g/L egen metode: Bromcresolgrønt

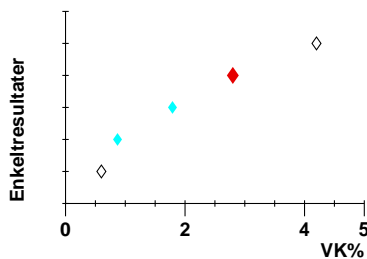
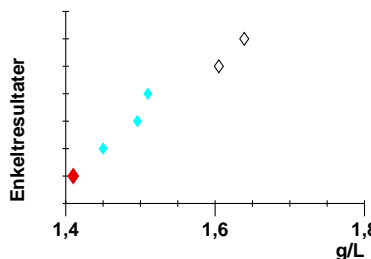


Metode	Gennemsnit	Standarddeviation	Antal lab.	egen middelværdi
Alle metoder:	42,4	1,3	23	44,2
Bromcresolgrønt	43,3	1,3	9	1
Bromcresol purpur	41,7	0,6	13	9
Immunturbidimetri	44,56		1	

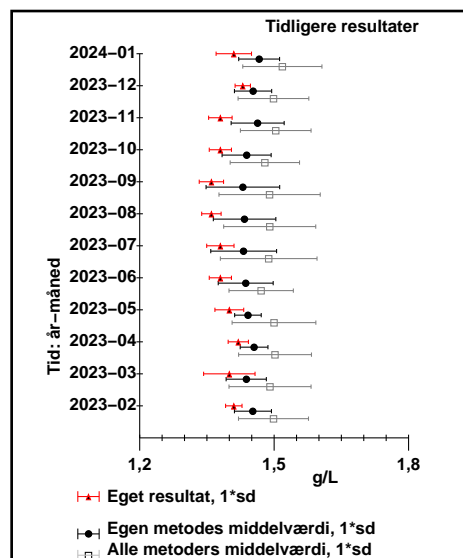


© DEKS 2024-01 2b

Antitrypsin; massek.; g/L egen metode: Turbidimetri

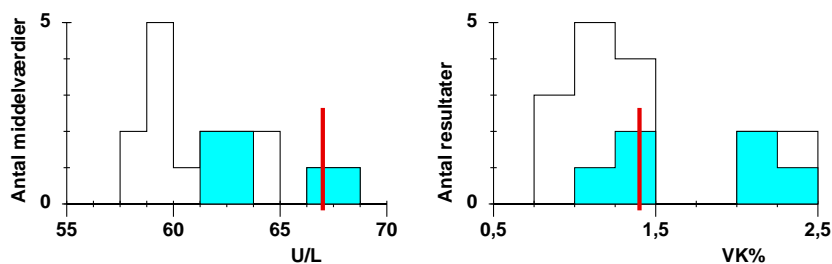


Metode	Gennemsnit	Standarddeviation	Antal lab.	egen middelværdi
Alle metoder:	1,52	0,09	6	1,41
Turbidimetri	1,47	0,05	4	2,8
Nefelometri	1,62	0,02	2	13

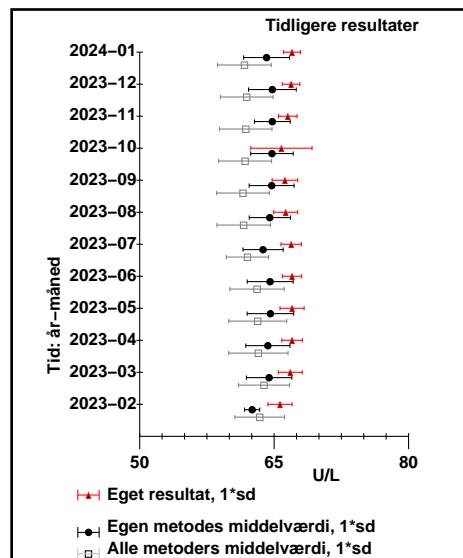


© DEKS 2024-01 3b

Amylase; kat.k.; U/L
egen metode: E-pNP-G7 (EPS), fotometri

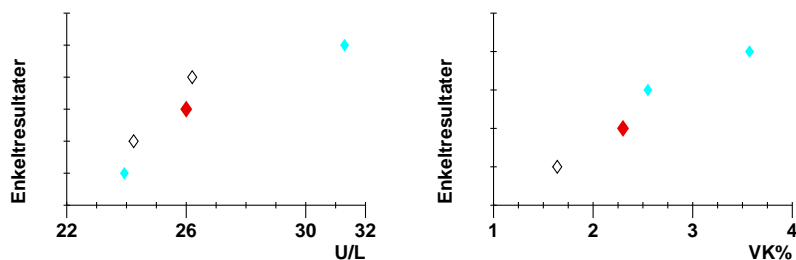


Metode	Gennemsnit	Standarddeviation	Antal lab.	egen middelværdi: 67
Alle metoder:	61,7	3,0	16	egen VK%: 1,4
E-pNP-G7 (EPS), fotometri	64	2,6	6	eget antal: 31
IFCC (ECCLS)	60	2,0	5	
Enzymatisk fotometri	58,74	0,09	3	
CNPG3, fotometri	62	4	2	

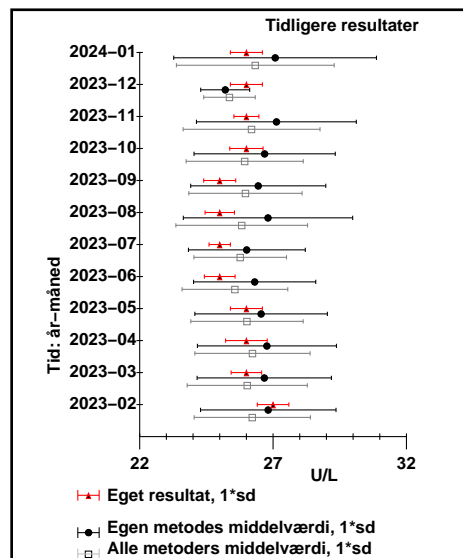


© DEKS 2024-01 4

Amylase, pancreastype; kat.k.; U/L
egen metode: E-pNP-G7 (EPS), fotometri

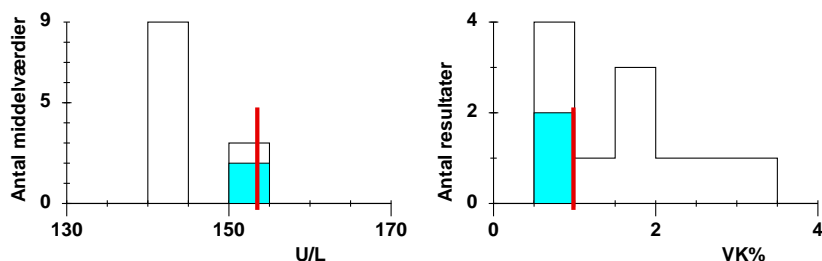


Metode	Gennemsnit	Standarddeviation	Antal lab.	egen middelværdi: 26
Alle metoder:	26	3	5	egen VK%: 2,3
E-pNP-G7 (EPS), fotometri	27	4	3	eget antal: 18
IFCC sammenlignende metoder (AMP)	25	1,4	2	

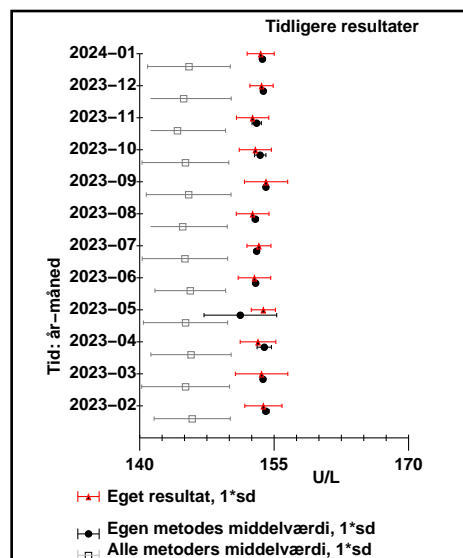


© DEKS 2024-01 5

Aspartattransaminase(ASAT); kat.k.; U/L
egen metode: IFCC (ECCLS)

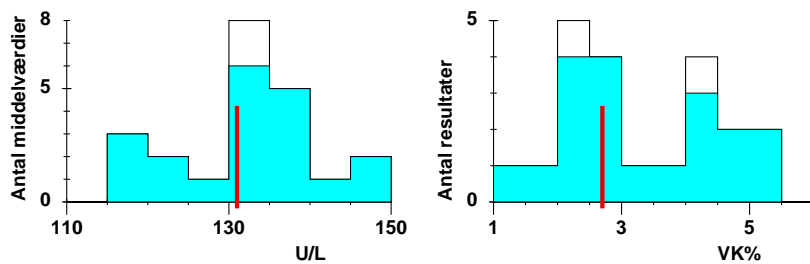


Metode	Gennemsnit	Standarddeviation	Antal lab.	egen middelværdi: 153,5
Alle metoder:	145	5	12	egen VK%: 0,9852
IFCC (ECCLS)	153,7	0,3	2	eget antal: 133
P-5-P/NADH. Fotometri	145	4	5	
NADH. Fotometri	143,9	0,4	3	
Fotometri	142	2	2	

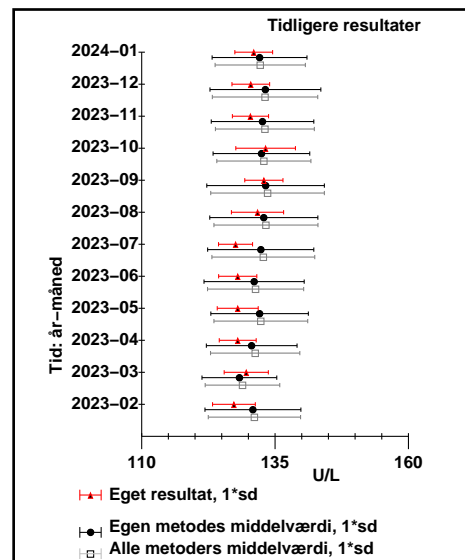


© DEKS 2024-01 6

Basisk fosfatase; kat.k.; U/L egen metode: IFCC sammenlignelige metoder

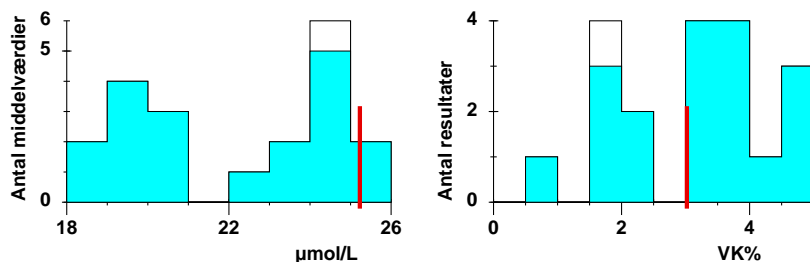


Metode	Gennemsnit	Standarddeviation	Antal lab.	egen middelværdi:	egen VK%:	eget antal:
Alle metoder:	132	8	22	131	2,7	31
IFCC sammenlignelige metoder	132	9	20			
IFCC 2011	133,5	0,7	2			

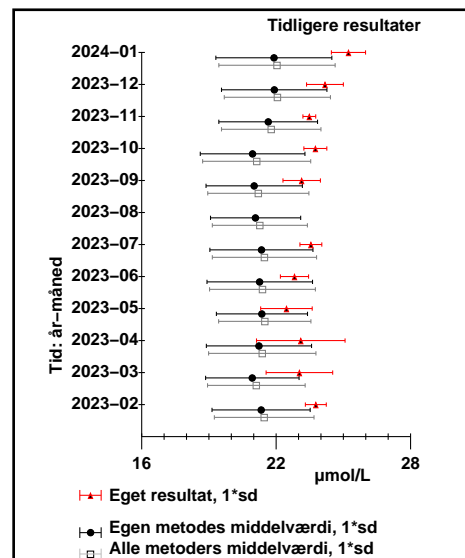


© DEKS 2024-01 7

Bilirubiner; stofk.; µmol/L egen metode: Diazo fotometri

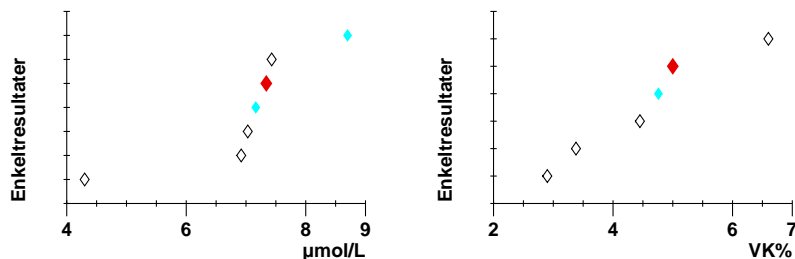


Metode	Gennemsnit	Standarddeviation	Antal lab.	egen middelværdi:	egen VK%:	eget antal:
Alle metoder:	22,0	2,6	20	25,23	3,02	27
Diazo fotometri	21,9	2,6	19			
Vanadate oxidation, fotometri	24,7		1			

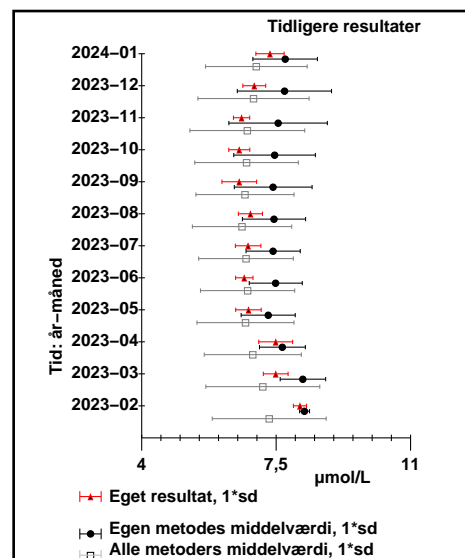


© DEKS 2024-01 8

Bilirubin(konjureret); stofk.; µmol/L egen metode: Vanadate oxidation, fotometri

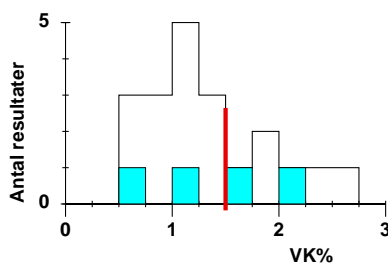
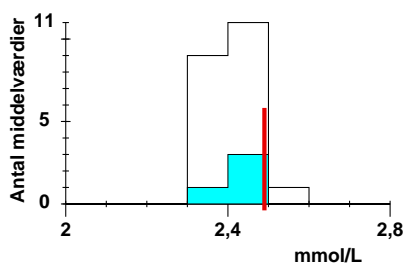


Metode	Gennemsnit	Standarddeviation	Antal lab.	egen middelværdi:	egen VK%:	eget antal:
Alle metoder:	7,0	1,3	7	7,34	5	12
Vanadate oxidation, fotometri	7,7	0,8	3			
Diazo fotometri	6,4	1,4	4			

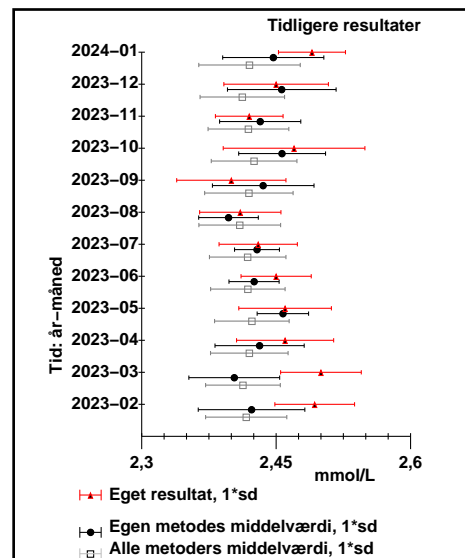


© DEKS 2024-01 9

Calcium; stofk.; mmol/L
egen metode: o-Cresolphthalin, fotometri

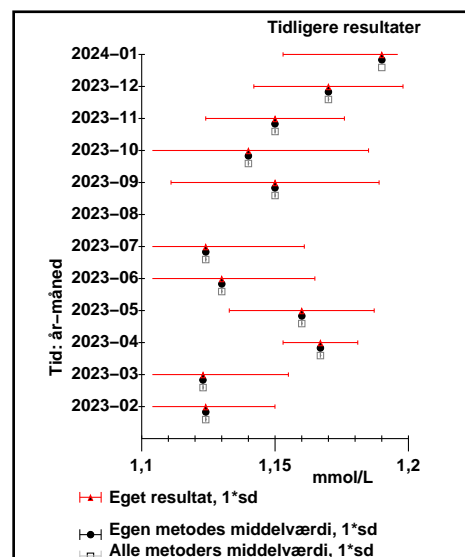


Metode	Gennemsnit	Standarddeviation	Antal lab.	egen middelværdi
Alle metoder:	2,42	0,057	21	2,49
o-Cresolphthalin, fotometri	2,45	0,06	4	1,5
Arsenazo, fotometri	2,41	0,06	10	eget antal:
NM-BAPTA fotometri	2,43	0,05	7	31

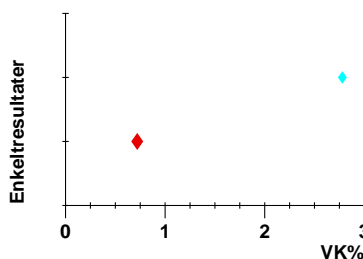
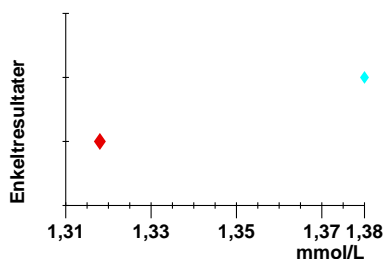


Calcium-ion(frit)(pH=7,40); stofk.; mmol/L
egen metode: ISE-direkte

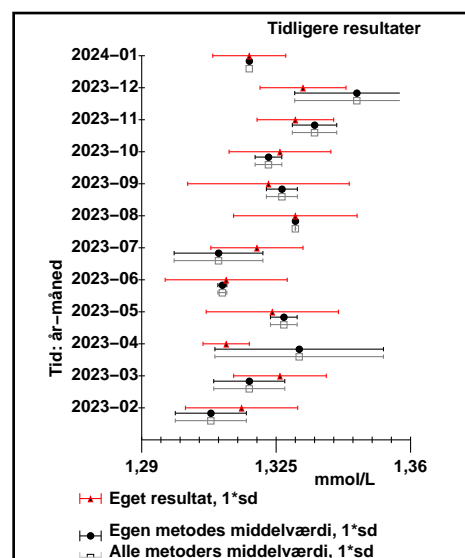
Metode	Gennemsnit	Standarddeviation	Antal lab.	egen middelværdi
Alle metoder:	1,19		1	1,19
ISE-direkte	1,19		1	3,11



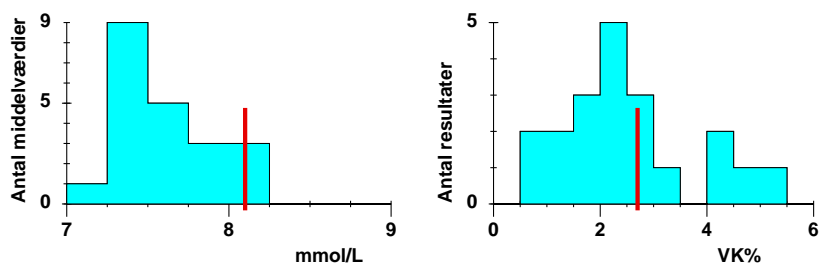
Calcium-ion(frit)(pH aktuel); stofk.; mmol/L
egen metode: ISE-direkte, potentiometri



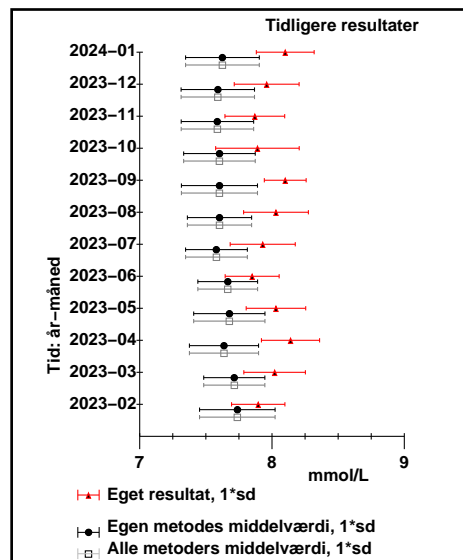
Metode	Gennemsnit	Standarddeviation	Antal lab.	egen middelværdi
Alle metoder:	1,35	0,04	2	1,318
ISE-direkte, potentiometri	1,35	0,04	2	0,72



Carbamid; stofk.; mmol/L
egen metode: Enzymatisk fotometri



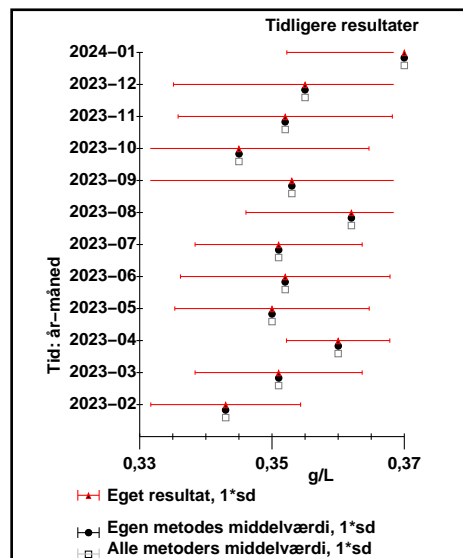
Metode	Gennemsnit	Standarddeviation	Antal lab.	egen middelværdi
Alle metoder:	7,63	0,28	21	8,1
Enzymatisk fotometri	7,63	0,28	21	2,7



© DEKS 2024-01 14

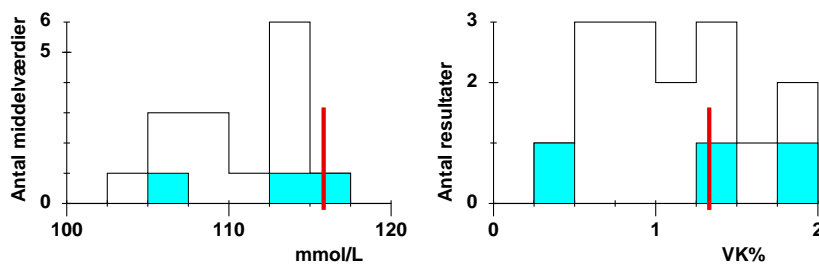
Ferroxidase(Ceruloplasmin); massek.; g/L
egen metode: Nefelometri

Metode	Gennemsnit	Standarddeviation	Antal lab.	egen middelværdi
Alle metoder:	0,37		1	0,37
Nefelometri	0,37		1	4,8

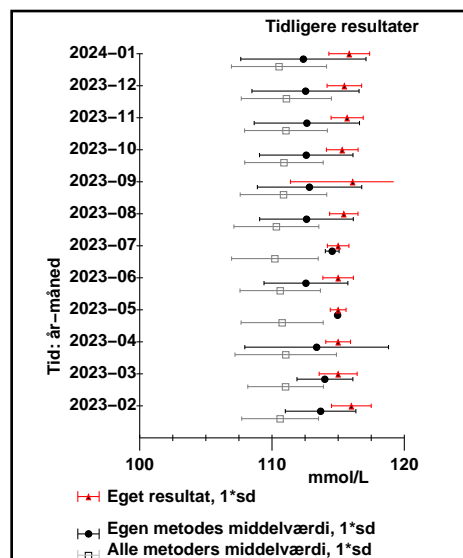


© DEKS 2024-01 17b

Chlorid; stofk.; mmol/L
egen metode: ISE-direkte

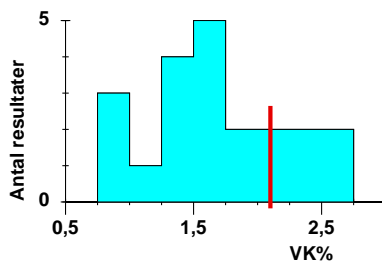
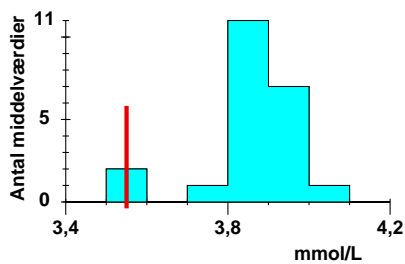


Metode	Gennemsnit	Standarddeviation	Antal lab.	egen middelværdi
Alle metoder:	111	3,6	15	115,84
ISE-direkte	112	5	3	1,33
ISE-indirekte	110	3,3	12	

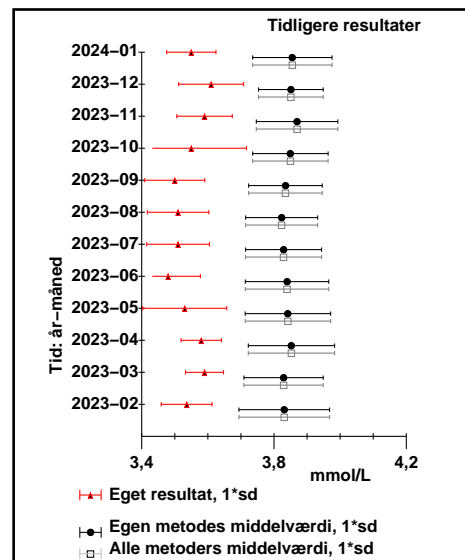


© DEKS 2024-01 18

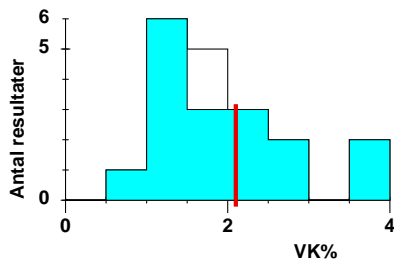
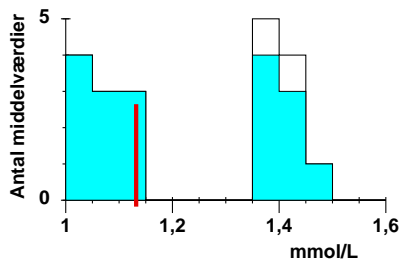
Cholesterol+ester; stofk.; mmol/L
egen metode: Enzymatisk fotometri



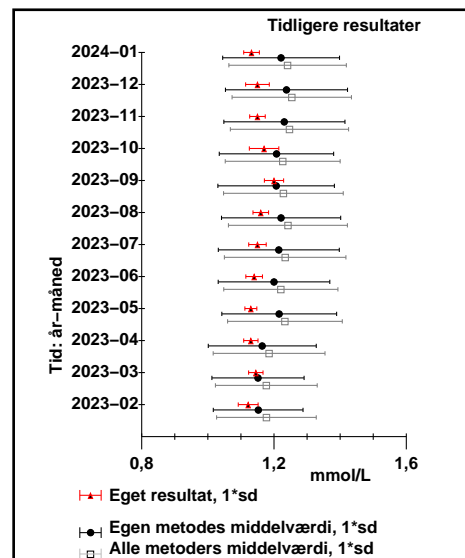
Metode	Gennemsnit	Standarddeviation	Antal lab.	egen middelværdi
Alle metoder:	3,86	0,12	22	3,55
Enzymatisk fotometri	3,86	0,12	22	2,1



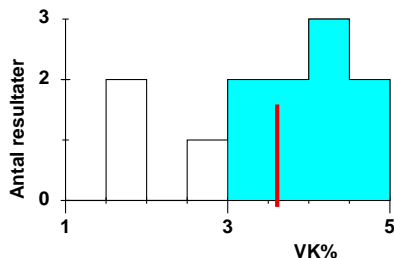
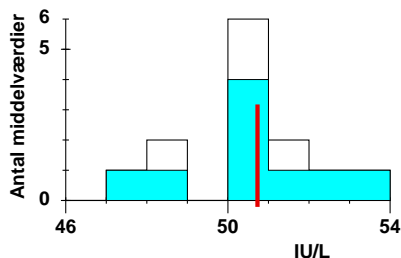
Cholesterol+ester, i HDL; stofk.; mmol/L
egen metode: Direkte HDL-måling



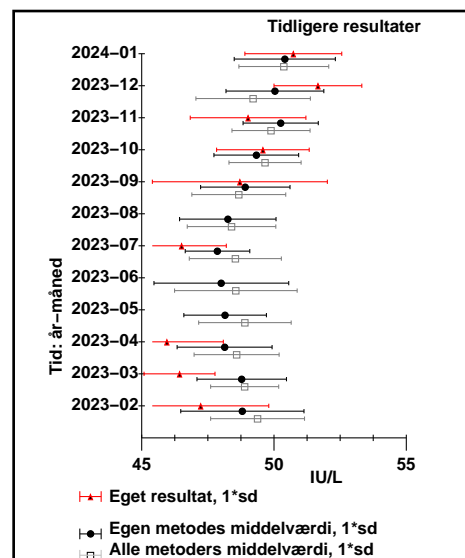
Metode	Gennemsnit	Standarddeviation	Antal lab.	egen middelværdi
Alle metoder:	1,24	0,18	20	1,132
Direkte HDL-måling	1,22	0,18	18	2,1
Fotometri	1,42	0,03	2	31



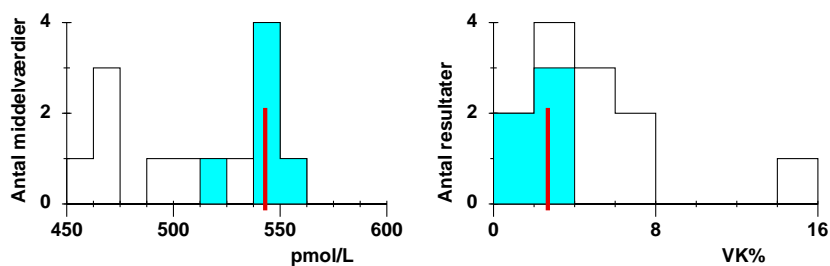
Choriogonadotropin+beta-kæder; arb.stofk.; IU/L
egen metode: Chemiluminescens immunoassay



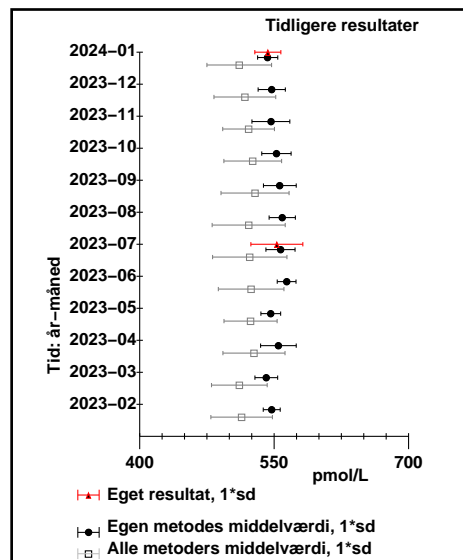
Metode	Gennemsnit	Standarddeviation	Antal lab.	egen middelværdi
Alle metoder:	50,4	1,7	13	50,73
Chemiluminescens immunoassay	50,4	1,9	9	3,61
Elektrokemiluminescens immunoassay	49,8	1,0	3	
Sandwich-immunoassay med flourescensdetektion	51,9		1	



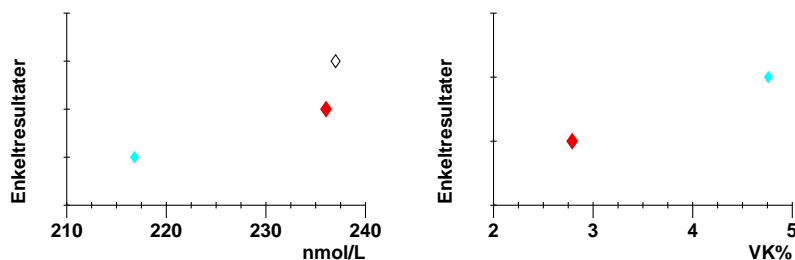
Cobalamin(Vitamin B12); stofk.; pmol/L
egen metode: Elektrokemiluminescens immunoassay



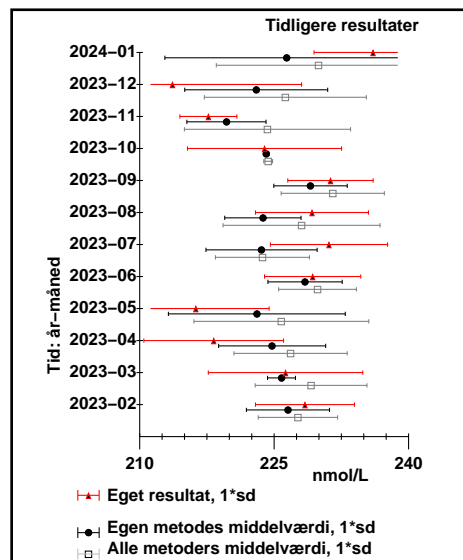
Metode	Gennemsnit	Standarddeviation	Antal lab.	egen middelværdi	egen VK%	eget antal
Alle metoder:	510	36	13	543	2,68	31
Elektrokemiluminescens immunoassay	543	11	6			
Chemiluminescens immunoassay	480	25	7			



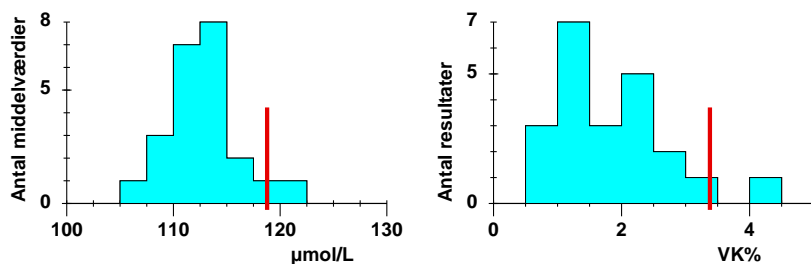
Cortisol; stofk.; nmol/L
egen metode: Chemiluminescens immunoassay



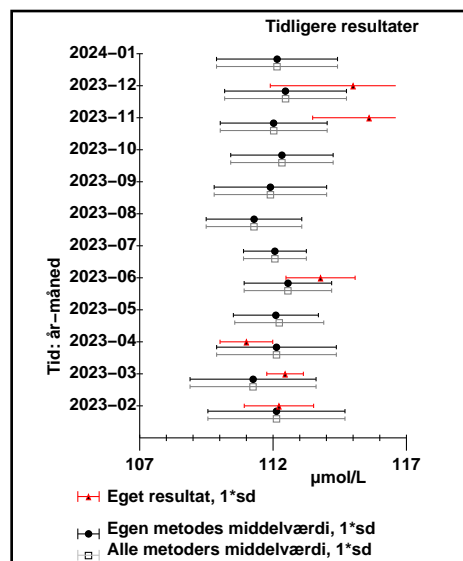
Metode	Gennemsnit	Standarddeviation	Antal lab.	egen middelværdi	egen VK%	eget antal
Alle metoder:	230	11	3	236,04	2,79	13
Chemiluminescens immunoassay	230	14	2			
Elektrokemiluminescens immunoassay	237		1			



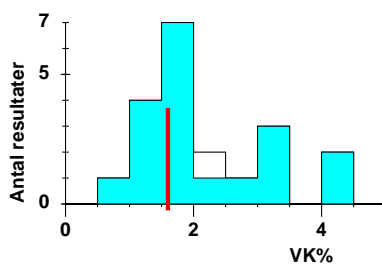
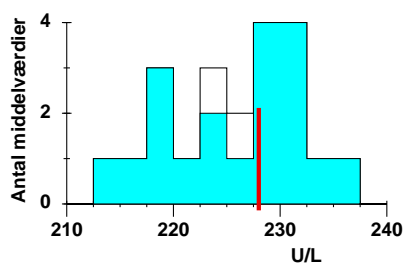
Creatininium; stofk.), N; µmol/L
egen metode: Enzymatisk fotometri



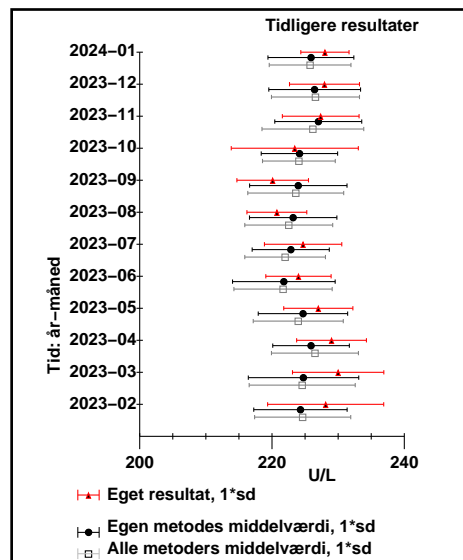
Metode	Gennemsnit	Standarddeviation	Antal lab.	egen middelværdi	egen VK%	eget antal
Alle metoder:	112,8	3,1	23	118,78	3,38	9
Enzymatisk fotometri	112,8	3,1	23			



Creatinkinase(CK); kat.k.; U/L
egen metode: ADP/NADPH, fotometri

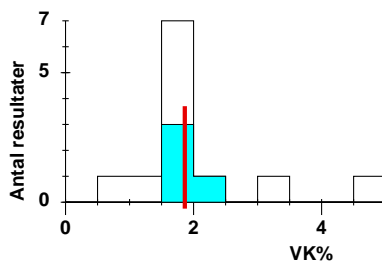
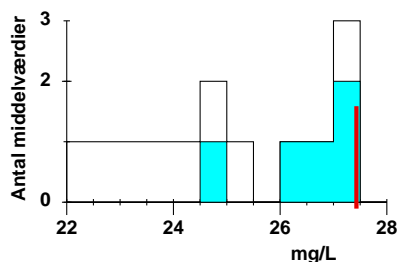


Metode	Gennemsnit	Standarddeviation	Antal lab.	egen middelværdi	egen VK%	eget antal
Alle metoder:	226	6	21	228	1,6	31
ADP/NADPH, fotometri	226	6	19			
Fotometri	225	2	2			

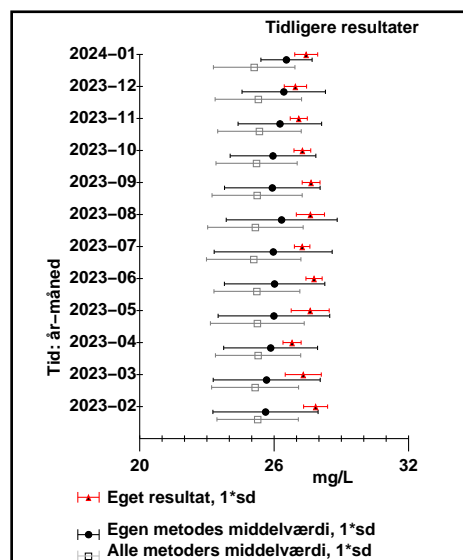


© DEKS 2024-01 27

C-reaktivt protein(CRP); massek.; mg/L
egen metode: Turbidimetri

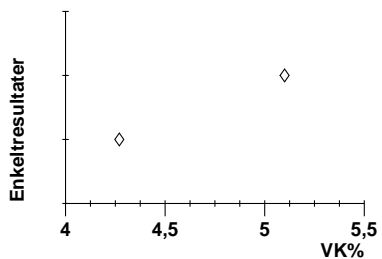
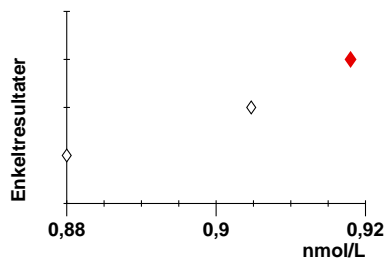


Metode	Gennemsnit	Standarddeviation	Antal lab.	egen middelværdi	egen VK%	eget antal
Alle metoder:	25,1	1,8	13	27,43	1,863	141
Turbidimetri	26,6	1,1	5			
Latex-turbidimetri	24,2	1,6	8			

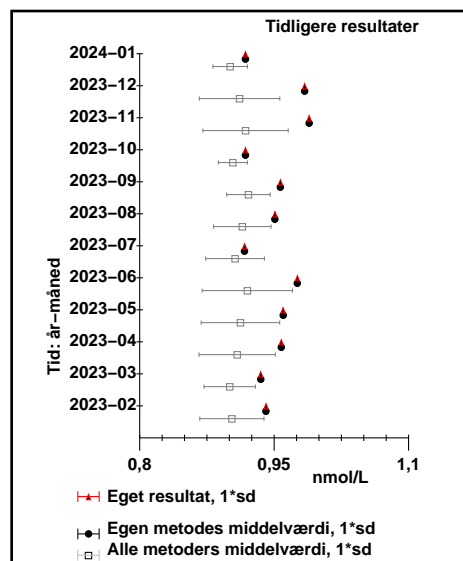


© DEKS 2024-01 28

Estradiol; stofk.; nmol/L
egen metode: Elektrokemiluminescens immunoassay (ECLIA)

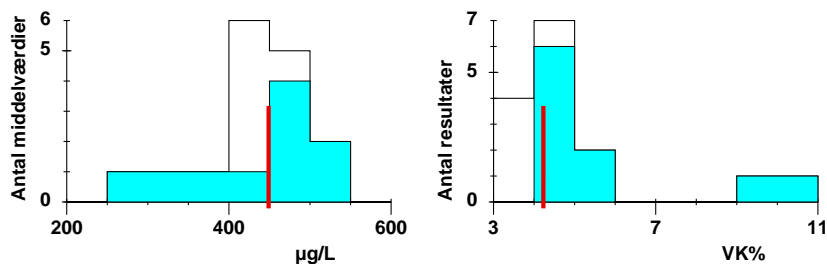


Metode	Gennemsnit	Standarddeviation	Antal lab.	egen middelværdi	egen VK%	eget antal
Alle metoder:	0,90	0,019	3	0,918	1	1
Elektrokemiluminescens immunoassay (ECLIA)	0,918		1			
Chemiluminescens immunoassay	0,89	0,017	2			

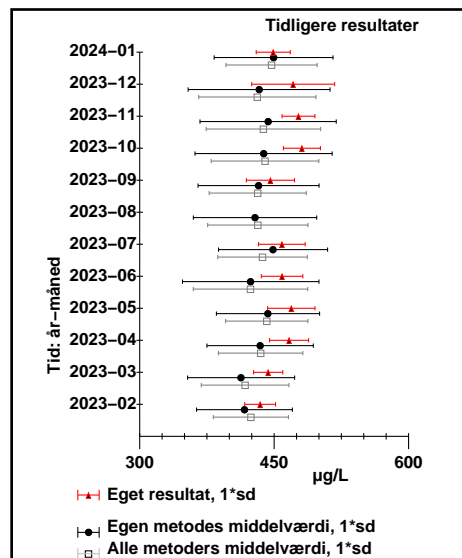


© DEKS 2024-01 32

Ferritin; massek.; µg/L egen metode: Chemiluminiscens immunoassay

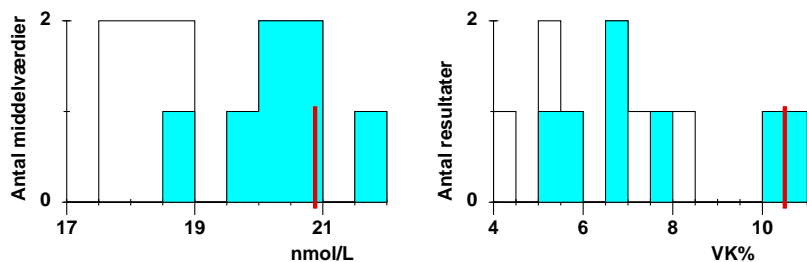


Metode	Gennemsnit	Standarddeviation	Antal lab.	egen middelværdi
Alle metoder:	440	60	16	448,98
Chemiluminiscens immunoassay	430	80	10	4,23
Elektrokemiluminescens immunoassay	444	13	6	eget antal: 43

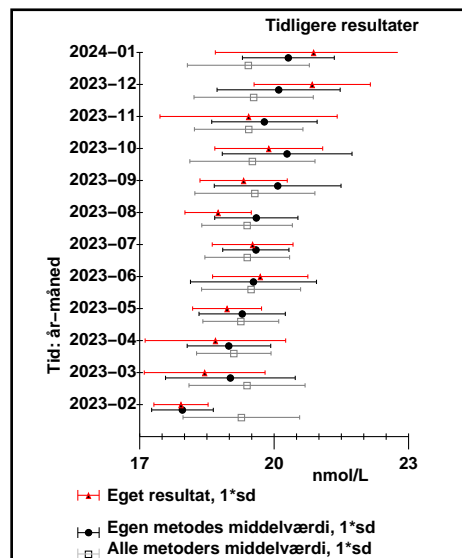


© DEKS 2024-01 33b

Folat; stofk.; nmol/L egen metode: Chemiluminiscens immunoassay

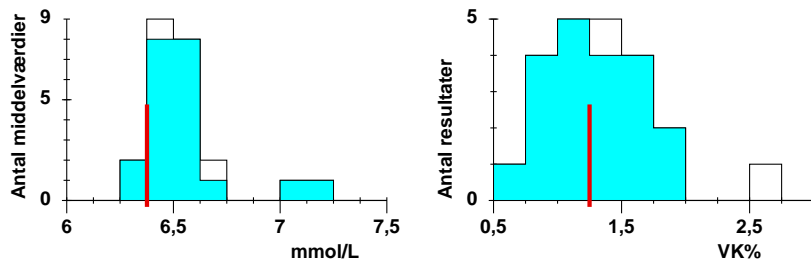


Metode	Gennemsnit	Standarddeviation	Antal lab.	egen middelværdi
Alle metoder:	19,4	1,4	12	20,88
Chemiluminiscens immunoassay	20,3	1,0	7	10,5
Elektrokemiluminescens immunoassay	18,2	0,4	5	eget antal: 16

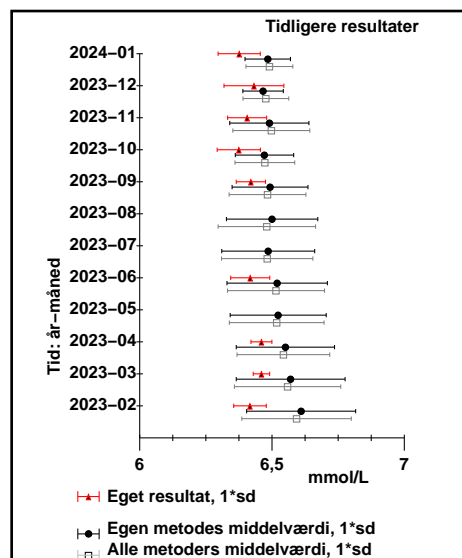


© DEKS 2024-01 34

Glukose; stofk.; mmol/L egen metode: Fotometri

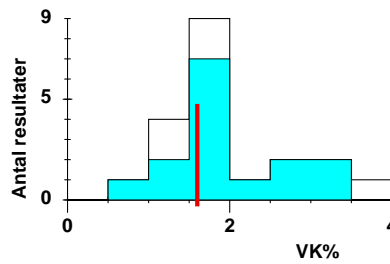
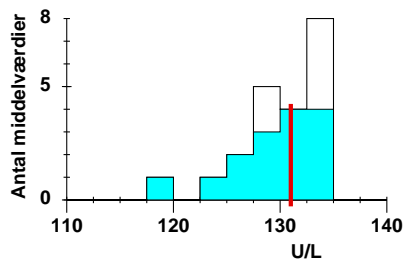


Metode	Gennemsnit	Standarddeviation	Antal lab.	egen middelværdi
Alle metoder:	6,55	0,20	23	6,3761
Fotometri	6,55	0,21	21	1,25
Amperometri	6,64		1	eget antal: 9
Glykoseoxidase, H2O2, fotometri	6,459		1	



© DEKS 2024-01 36

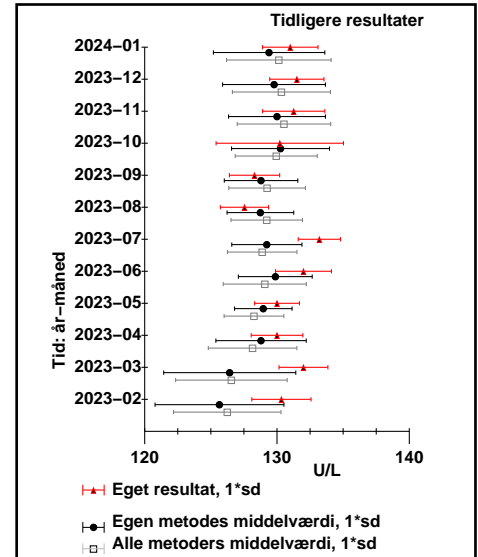
Gamma-Glutamyltransferase(GGT); kat.k.; U/L egen metode: Glucana/p-nitroanalin, fotometri



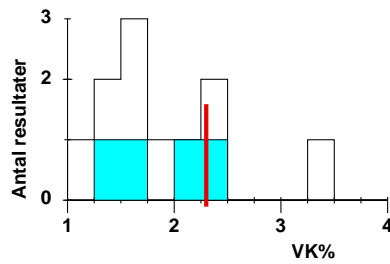
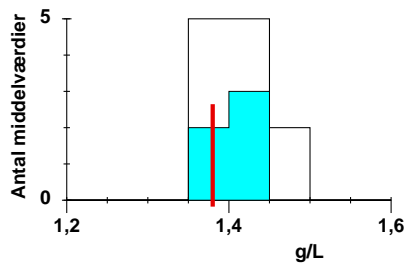
Metode

Alle metoder:
Glucana/p-nitroanalin, fotometri
IFCC (ECCLS)

Gennemsnit	Standarddeviation	Antal lab.	egen middelværdi:	egen VK%:	egen antal:
130,1	4,0	21	131	1,6	31
129	4,2	15			
132	2,7	6			



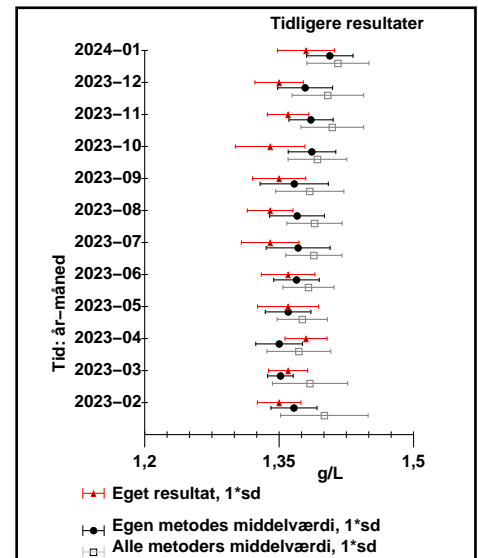
Haptoglobin; massek.; g/L egen metode: Turbidimetri



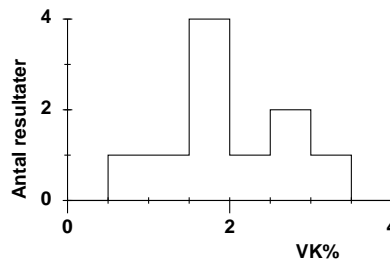
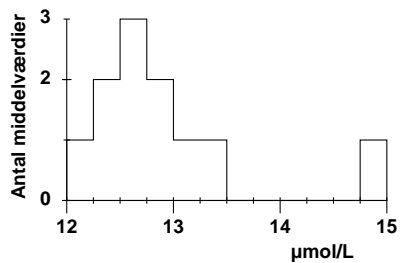
Metode

Alle metoder:
Turbidimetri
Immunturbidimetri
Nefelometri

Gennemsnit	Standarddeviation	Antal lab.	egen middelværdi:	egen VK%:	egen antal:
1,42	0,035	12	1,38	2,3	16
1,41	0,026	5			
1,41	0,04	6			
1,473		1			



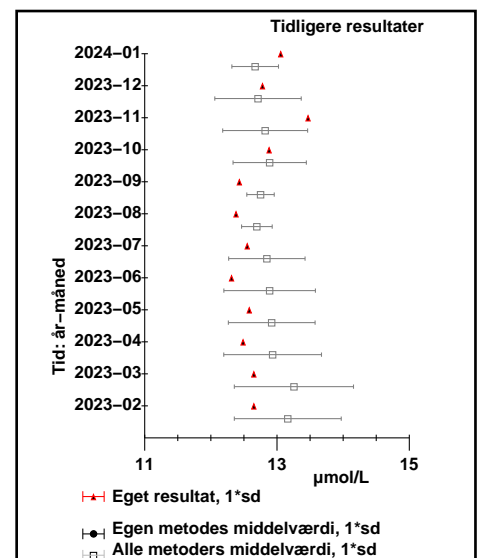
Immunglobulin A; stofk.; µmol/L egen metode: Ukendt



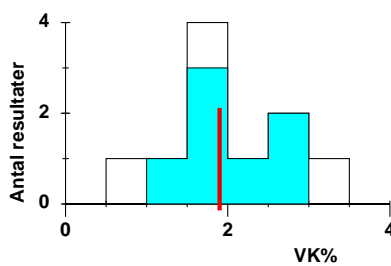
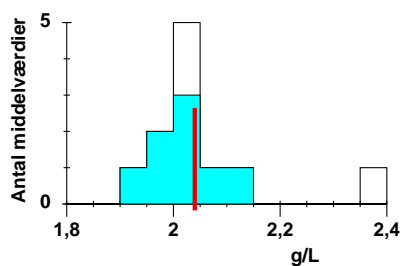
Metode

Alle metoder:
Turbidimetri
Immunturbidimetri
Nefelometri

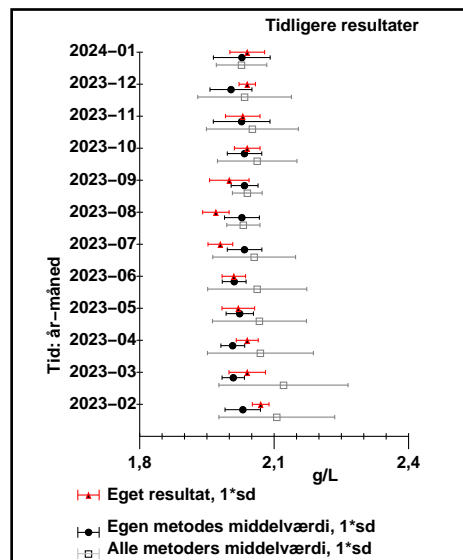
Gennemsnit	Standarddeviation	Antal lab.
12,9	0,7	11
12,7	0,13	2
12,7	0,4	8
14,76875		1



Immunglobulin A; massek.; g/L
egen metode: Immunturbidimetri

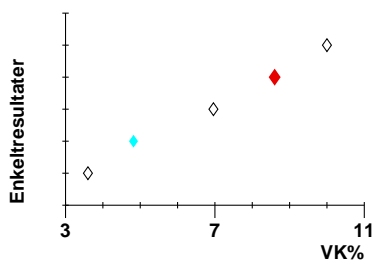
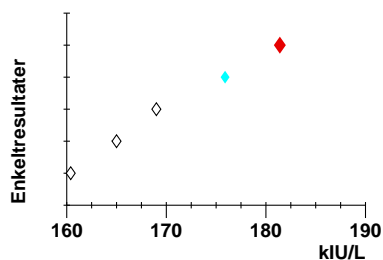


Metode	Gennemsnit	Standarddeviation	Antal lab.	egen middelværdi: 2,04
Alle metoder:	2,06	0,11	11	egen VK%: 1,9
Immunturbidimetri	2,03	0,06	8	eget antal: 14
Turbidimetri	2,02	0,02	2	
Nefelometri	2,363		1	

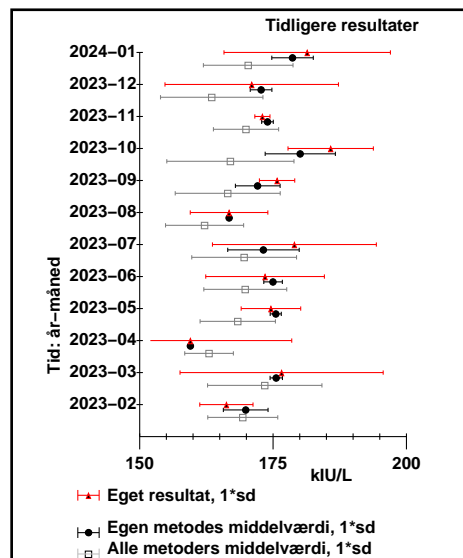


© DEKS 2024-01 41b

Immunglobulin E; arb.stofk.; kIU/L
egen metode: Flourosens immunoassay

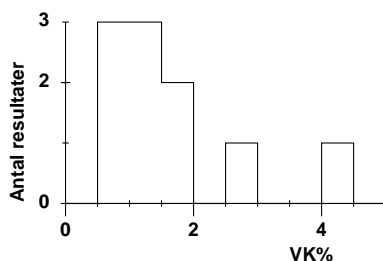
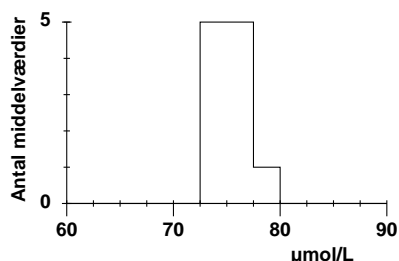


Metode	Gennemsnit	Standarddeviation	Antal lab.	egen middelværdi: 181,4
Alle metoder:	170	8	5	egen VK%: 8,6
Flourosens immunoassay	179	4	2	eget antal: 5
Enzymatisk immunoassay	167	3	2	
Chemiluminiscens immunoassay	160,4		1	

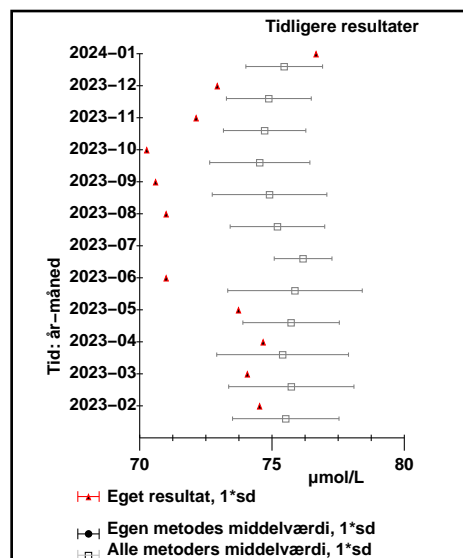


© DEKS 2024-01 42

Immunglobulin G; stofk.; µmol/L
egen metode: Ukendt

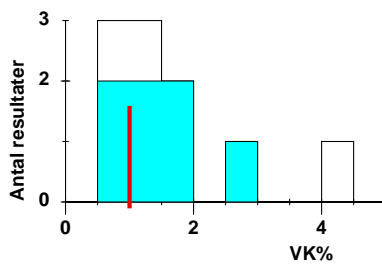
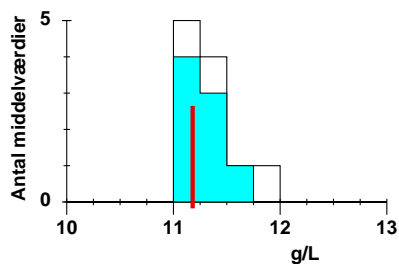


Metode	Gennemsnit	Standarddeviation	Antal lab.
Alle metoder:	75,5	1,5	11
Turbidimetri	75	1,5	2
Immunturbidimetri	75,1	0,9	8
Nefelometri	78,866667		1

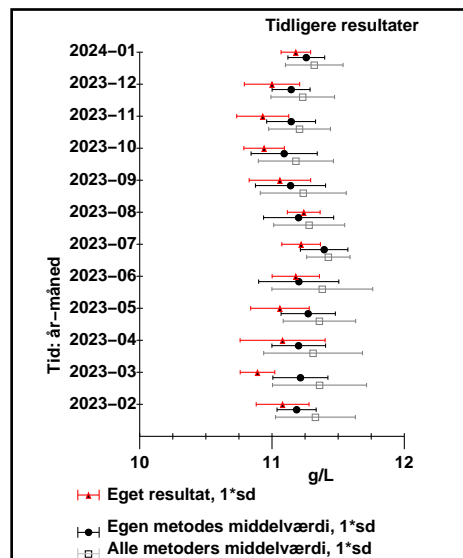


© DEKS 2024-01 43a

Immunglobulin G; massek.; g/L egen metode: Immunturbidimetri

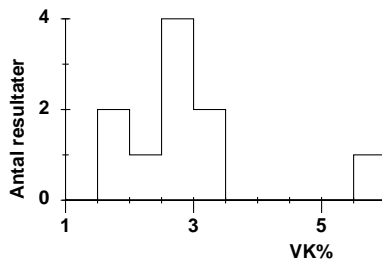
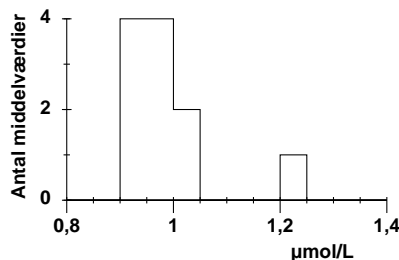


Metode	Gennemsnit	Standarddeviation	Antal lab.	egen middelværdi
Alle metoder:	11,32	0,22	11	11,18
Immunturbidimetri	11,26	0,14	8	egen VK%: 1
Turbidimetri	11,3	0,2	2	eget antal: 14
Nefelometri	11,83		1	

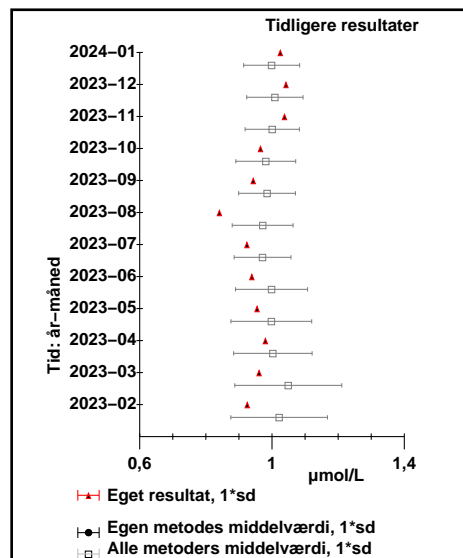


© DEKS 2024-01 43b

Immunglobulin M; stofk.; µmol/L egen metode: Ukendt

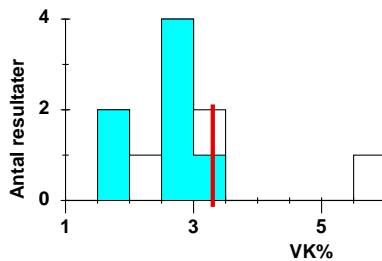
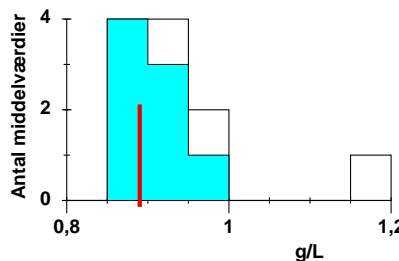


Metode	Gennemsnit	Standarddeviation	Antal lab.
Alle metoder:	1,00	0,08	11
Immunturbidimetri	0,97	0,034	8
Turbidimetri	1,01	0,03	2
Nefelometri	1,231579		1

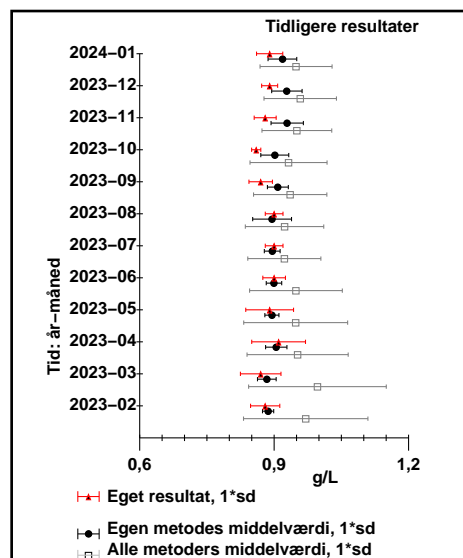


© DEKS 2024-01 44a

Immunglobulin M; massek.; g/L egen metode: Immunturbidimetri

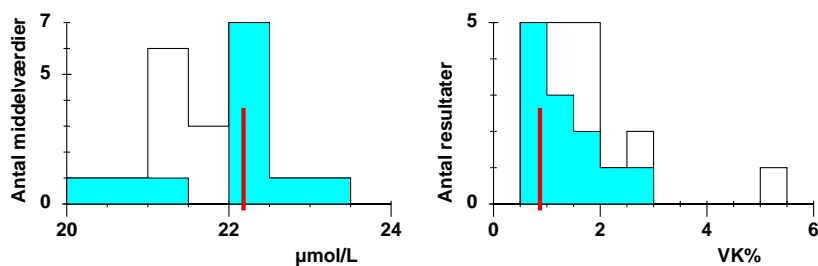


Metode	Gennemsnit	Standarddeviation	Antal lab.	egen middelværdi
Alle metoder:	0,95	0,08	11	0,89
Immunturbidimetri	0,92	0,032	8	egen VK%: 3,3
Turbidimetri	0,96	0,03	2	eget antal: 13
Nefelometri	1,17		1	

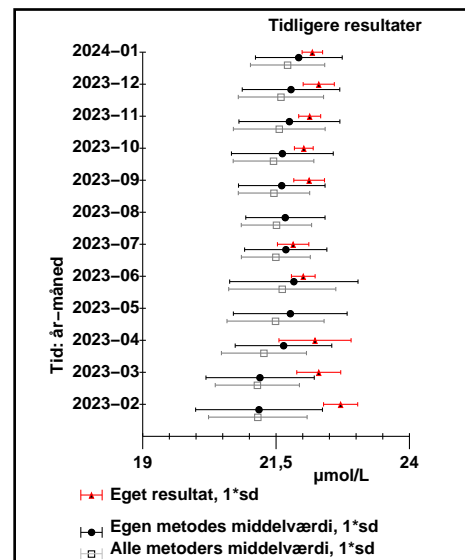


© DEKS 2024-01 44b

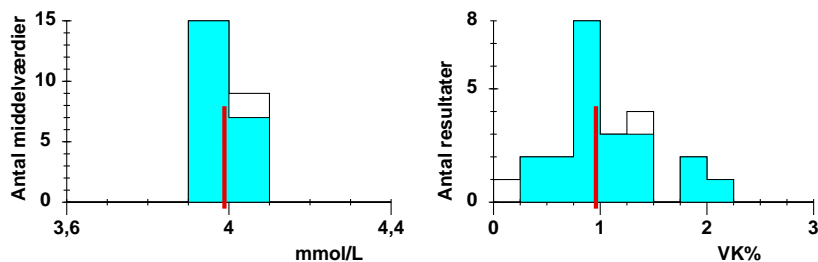
Jern; stofk.; $\mu\text{mol/L}$
egen metode: Ferene, fotometri



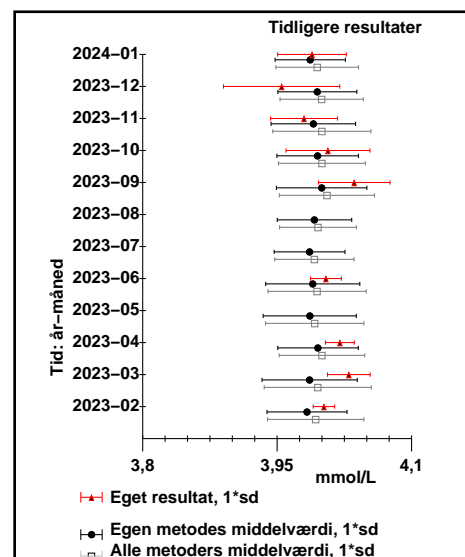
Metode	Gennemsnit	Standard deviation	Antal lab.	egen middelværdi	egen VK%	eget antal
Alle metoder:	21,7	0,7	20	22,18	0,87	32
Ferene, fotometri	21,9	0,8	12			
Ferrozine, fotometri	21,4	0,30	8			



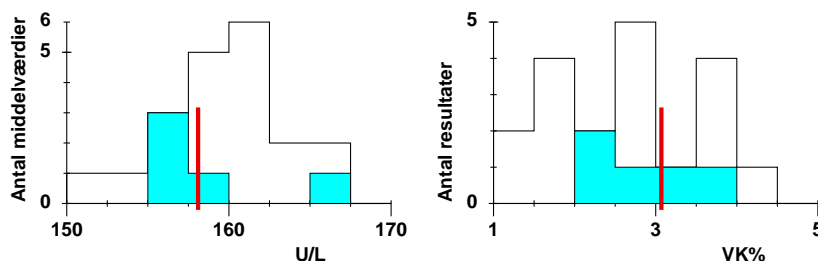
Kalium-ion; stofk., N; mmol/L
egen metode: ISE-indirekte



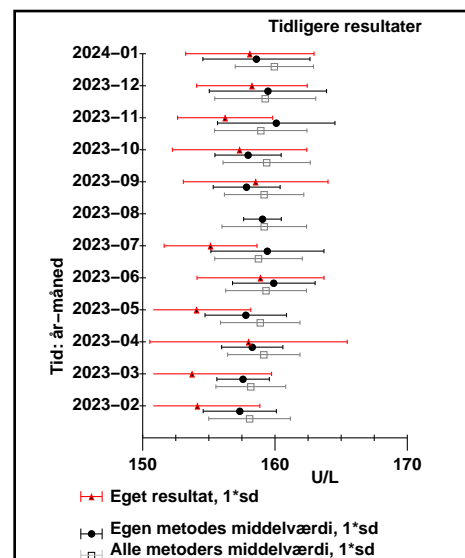
Metode	Gennemsnit	Standard deviation	Antal lab.	egen middelværdi	egen VK%	eget antal
Alle metoder:	3,99	0,046	24	3,9889	0,96	9
ISE-indirekte	3,987	0,039	22			
ISE-direkte	4,08	0,03	2			



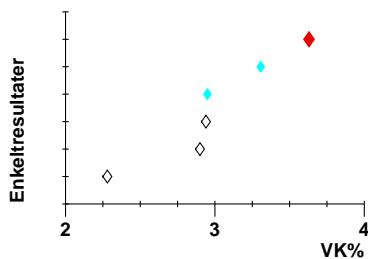
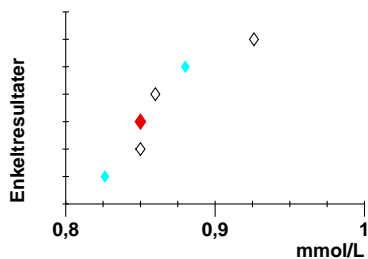
Lactatdehydrogenase(LD, LDH); kat.k.; U/L
egen metode: IFCC sammenlignende metoder



Metode	Gennemsnit	Standard deviation	Antal lab.	egen middelværdi	egen VK%	eget antal
Alle metoder:	159,8	4,0	20	158,1	3,07	31
IFCC sammenlignende metoder	159	4	5			
Lactat, NAD/NADH	159	5	6			
Pyrovat, NAD/NADH	160	3	5			
IFCC (ECCLS)	162	3	4			



Lithium-ion; stofk.; mmol/L egen metode: Kolometri

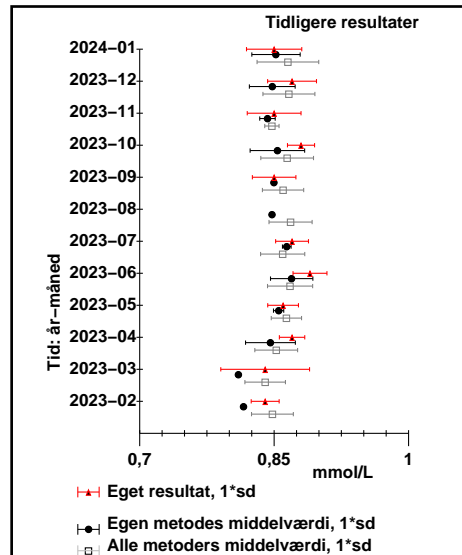


Metode

Alle metoder:
Kolometri
Kemisk fotometri

Gennem- snit	Standard- deviation	Antal lab.
0,87	0,03	6
0,85	0,03	3
0,88	0,04	3

egen middelværdi: 0,85
egen VK%: 3,63
eget antal: 7



© DEKS 2024-01 51

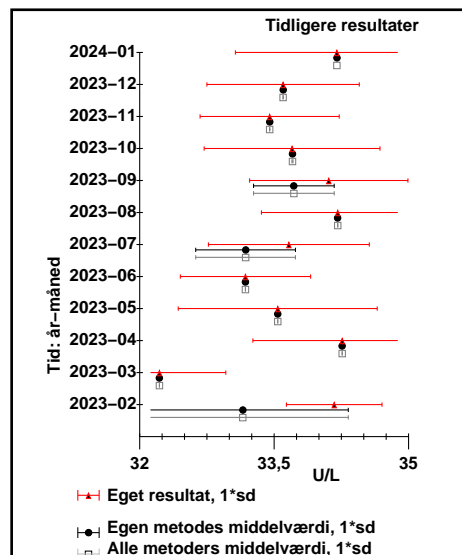
Lipoproteinlipase; kat.k.; U/L egen metode: Fotometri

Metode

Alle metoder:
Fotometri

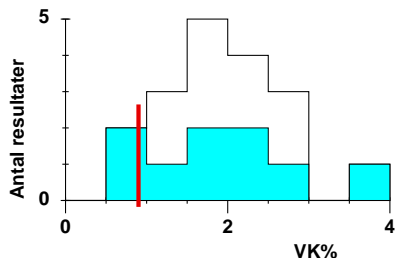
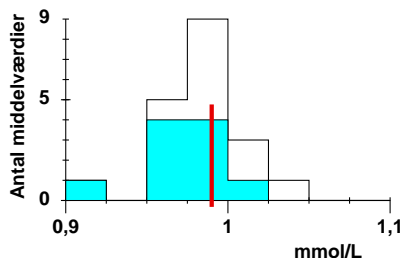
Gennem- snit	Standard- deviation	Antal lab.
34,2		1
34,2		1

egen middelværdi: 34,2
egen VK%: 3,31
eget antal: 39



© DEKS 2024-01 52

Magnesium; stofk.; mmol/L egen metode: Fotometri

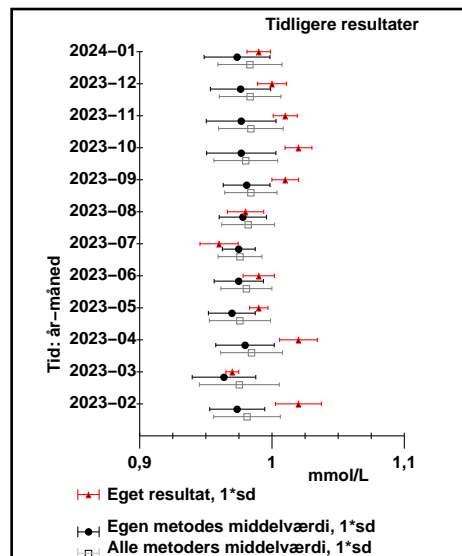


Metode

Alle metoder:
Fotometri
Enzymatic
Kolometri

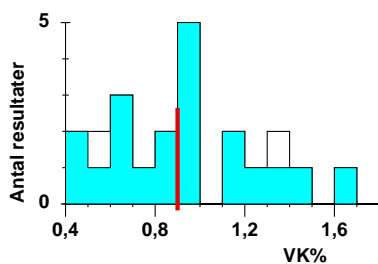
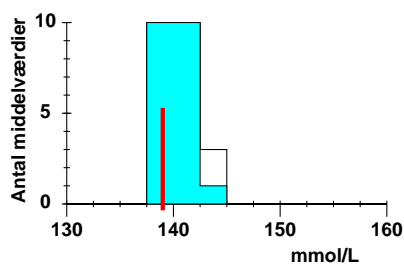
Gennem- snit	Standard- deviation	Antal lab.
0,983	0,024	19
0,974	0,025	10
0,996	0,020	8
0,98		1

egen middelværdi: 0,99
egen VK%: 0,9
eget antal: 9

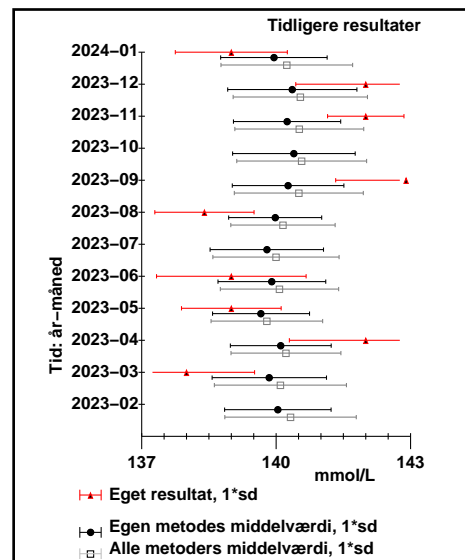


© DEKS 2024-01 54

Natrium-ion; stofk.; mmol/L
egen metode: ISE-indirekte

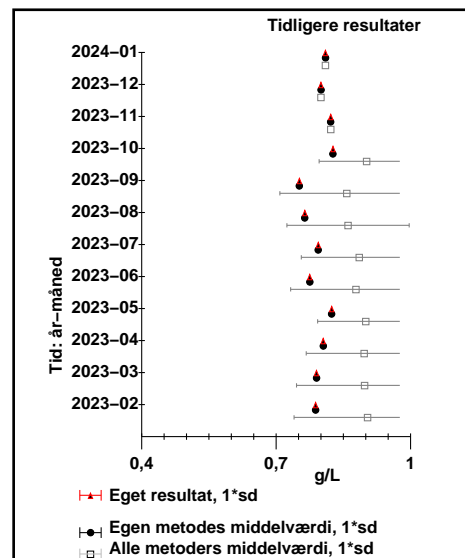


Metode	Gennemsnit	Standarddeviation	Antal lab.	egen middelværdi
Alle metoder:	140,4	1,6	23	139
ISE-indirekte	140,1	1,5	21	0,9
ISE-direkte	143,1	0,3	2	9

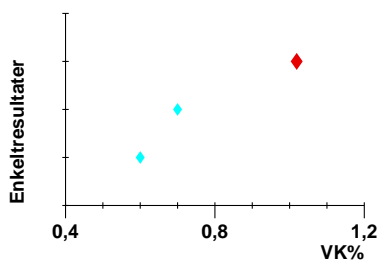
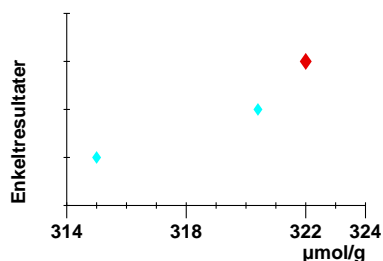


Orosomucoid; massek.; g/L
egen metode: Immunturbidimetri

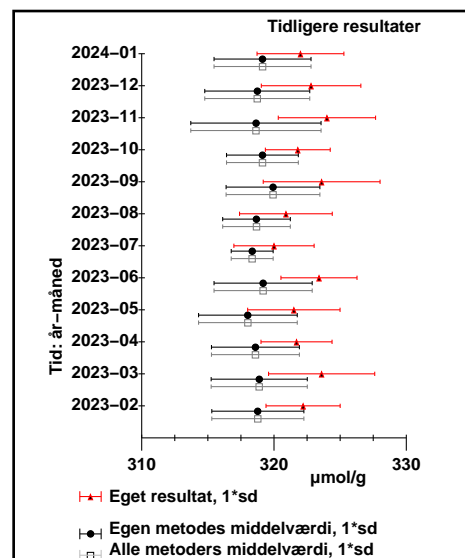
Metode	Gennemsnit	Standarddeviation	Antal lab.	egen middelværdi
Alle metoder:	0,81		1	0,81
Immunturbidimetri	0,81		1	1



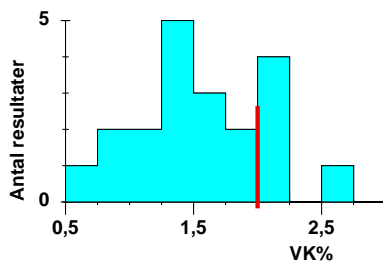
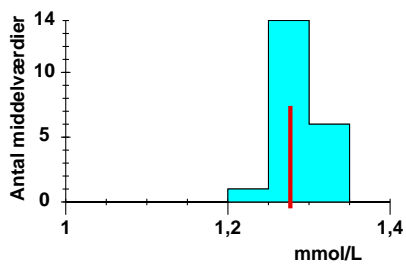
Opløst substans(Osmolalitet); molal.; µmol/g
egen metode: Frysepunktssænkning



Metode	Gennemsnit	Standarddeviation	Antal lab.	egen middelværdi
Alle metoder:	319	4	3	322
Frysepunktssænkning	319	4	3	1,019



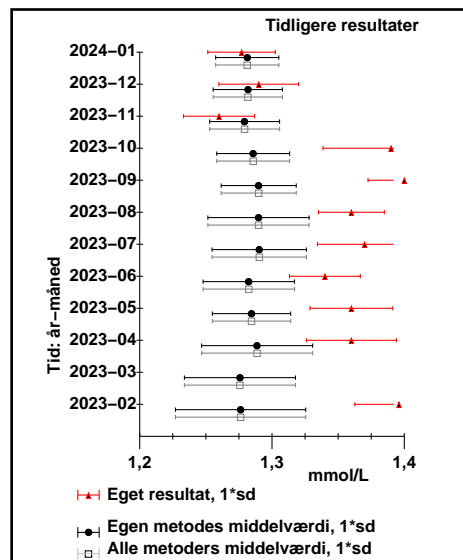
Phosphat(P, uorganisk); stofk.; mmol/L
egen metode: Fotometri



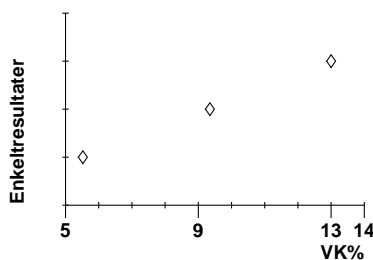
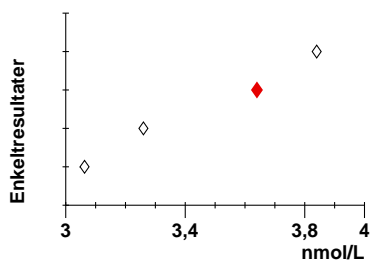
Metode

Alle metoder:
Fotometri

Gennemsnit	Standard deviation	Antal lab.	egen middelværdi
1,281	0,024	21	1,277
1,281	0,024	21	egen VK%: 2
			eget antal: 31



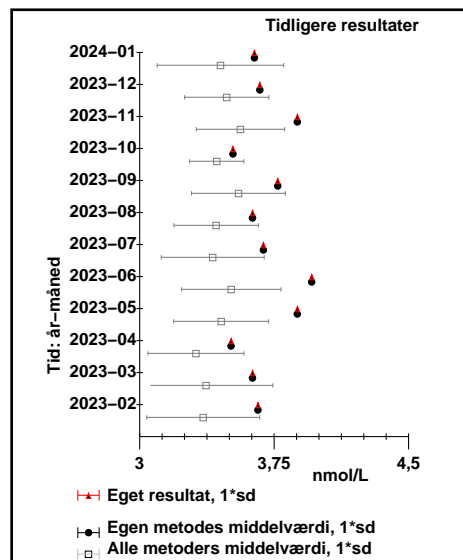
Progesteron; stofk.; nmol/L
egen metode: Elektrokemiluminescens immunoassay



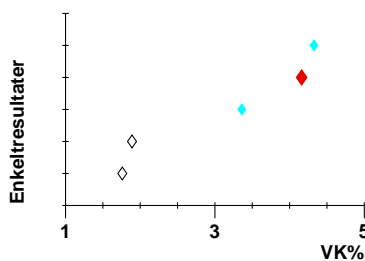
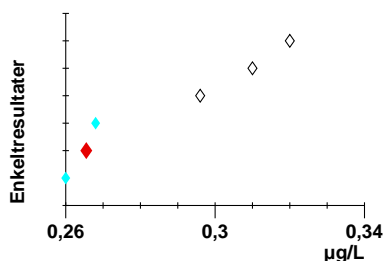
Metode

Alle metoder:
Elektrokemiluminescens immunoassay
Chemiluminescens immunoassay

Gennemsnit	Standard deviation	Antal lab.	egen middelværdi
3,5	0,4	4	3,64
3,64		1	egen VK%:
3,4	0,4	3	eget antal: 1



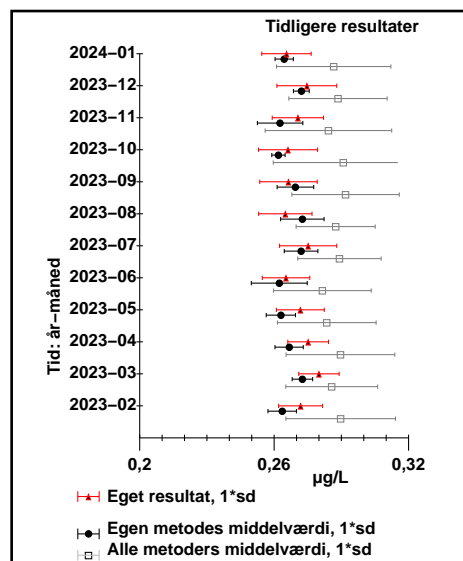
Prostata-specifikt antigen(Total); massek.; µg/L
egen metode: Chemiluminescens immunoassay



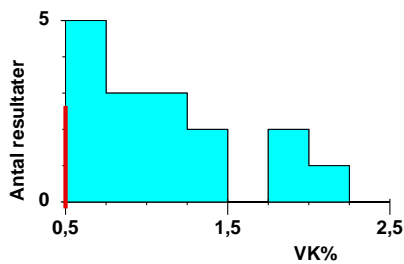
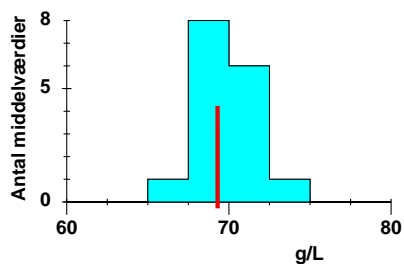
Metode

Alle metoder:
Chemiluminescens immunoassay
Elektrokemiluminescens immunoassay

Gennemsnit	Standard deviation	Antal lab.	egen middelværdi
0,29	0,025	6	0,2655
0,265	0,004	3	egen VK%: 4,161
0,309	0,012	3	eget antal: 36



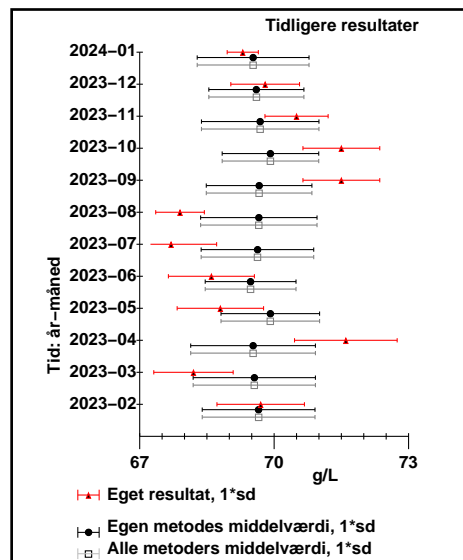
Protein; massek.; g/L egen metode: Fotometri



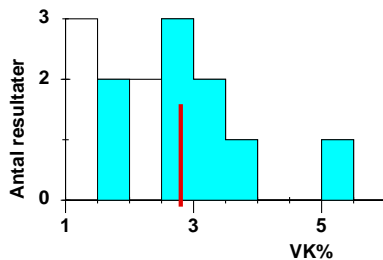
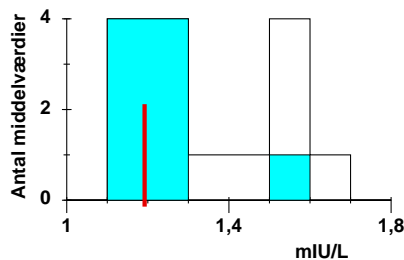
Metode

Alle metoder:
Fotometri

Gennemsnit	Standarddeviation	Antal lab.	egen middelværdi: 69,3
69,8	1,6	16	egen VK%: 0,5
69,8	1,6	16	eget antal: 9



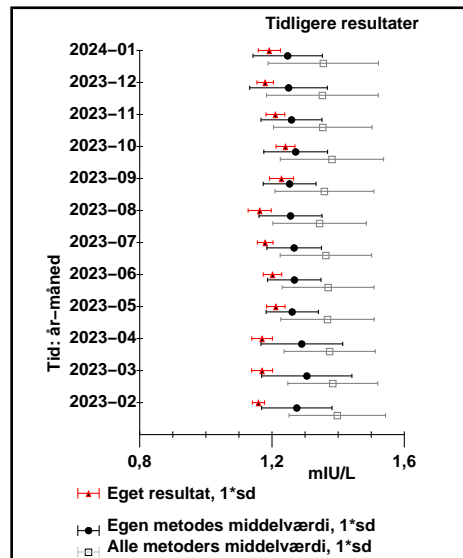
Thyrotropin(TSH); arb.stofk.; mIU/L egen metode: Chemiluminescens immunoassay



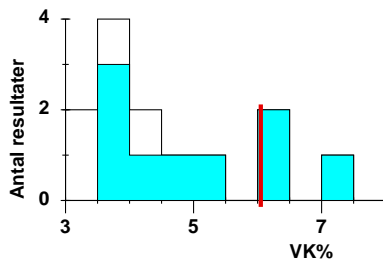
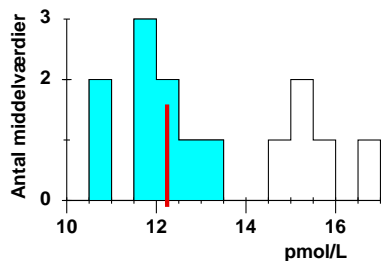
Metode

Alle metoder:
Chemiluminescens immunoassay
Elektrokemiluminescens immunoassay
Sandwich-immunoassay med flourescensdetektion

Gennemsnit	Standarddeviation	Antal lab.	egen middelværdi: 1,192
1,36	0,17	15	egen VK%: 2,8
1,25	0,10	9	eget antal: 15
1,55	0,04	5	
1,351		1	



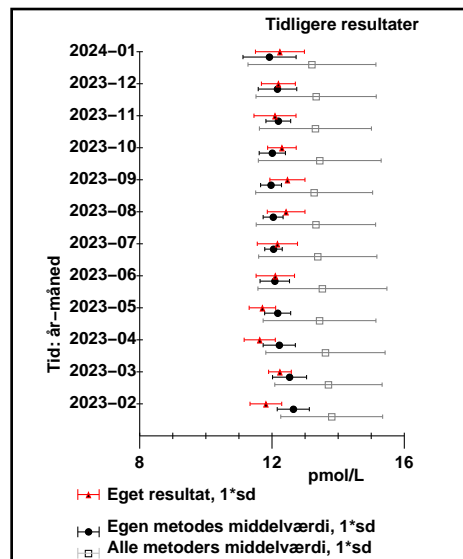
Thyroxin(frit)(Frit T4); stofk.; pmol/L egen metode: Chemiluminescens immunoassay



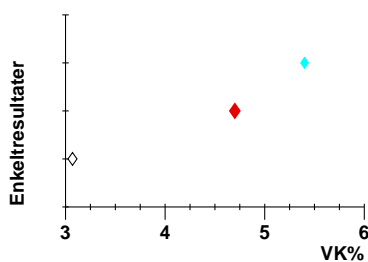
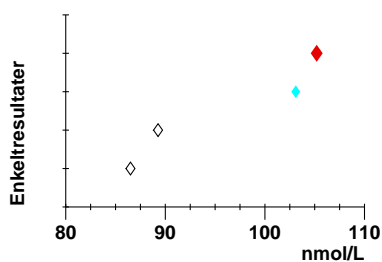
Metode

Alle metoder:
Chemiluminescens immunoassay
Elektrokemiluminescens immunoassay

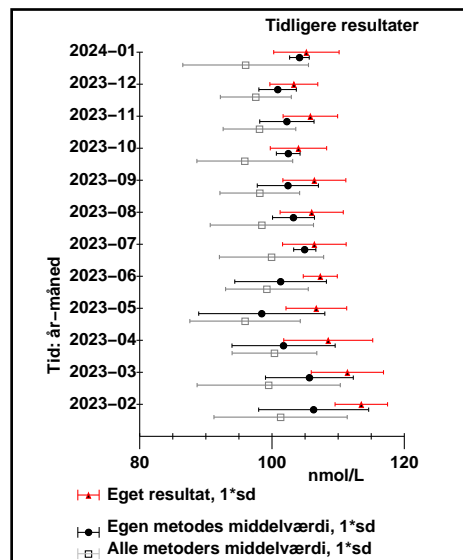
Gennemsnit	Standarddeviation	Antal lab.	egen middelværdi: 12,24
13,2	1,9	14	egen VK%: 6,05
11,9	0,8	9	eget antal: 20
15,5	0,7	5	



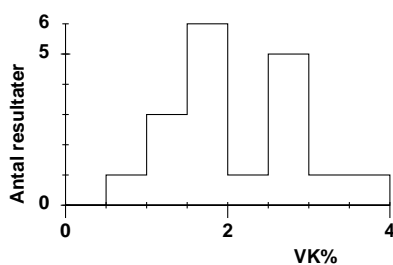
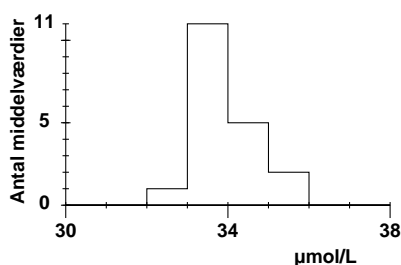
Thyroxin(T4); stofk.; nmol/L
egen metode: Chemiluminescens immunoassay



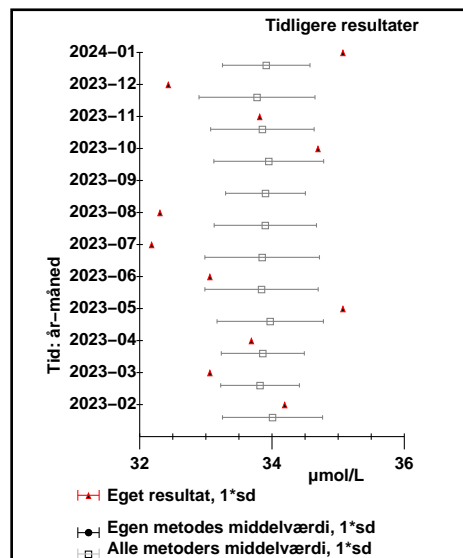
Metode	Gennemsnit	Standarddeviation	Antal lab.	egen middelværdi	egen VK%	eget antal
Alle metoder:	96	9	4	105,2	4,7	
Chemiluminescens immunoassay	104	1,5	2			
Chemiluminiscens immunoassay	89,27		1			
Elektrokemiluminescens immunoassay	86,5		1			



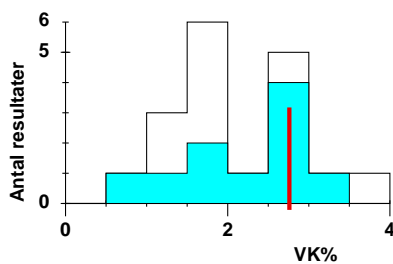
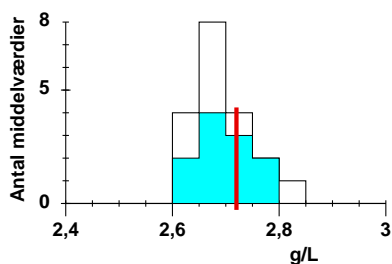
Transferrin; stofk.; µmol/L
egen metode: Ukendt



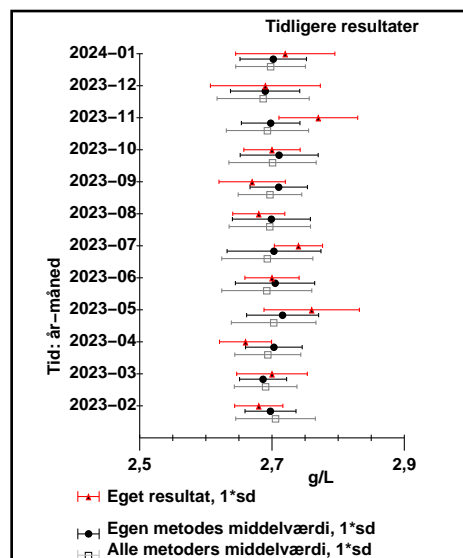
Metode	Gennemsnit	Standarddeviation	Antal lab.
Alle metoder:	33,9	0,7	19
Immunturbidimetri	33,5	0,3	6
Turbidimetri	34,0	0,6	11
Nefelometri	34,9	0,6	2



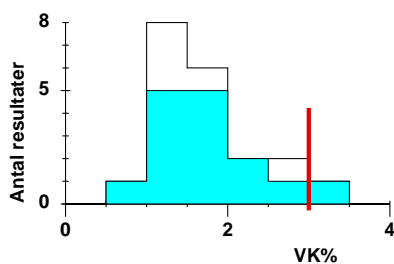
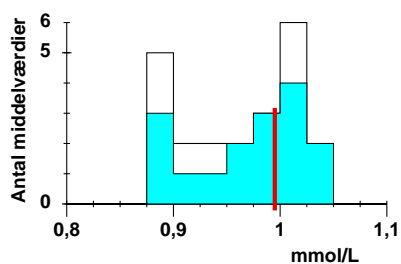
Transferrin; massek.; g/L
egen metode: Turbidimetri



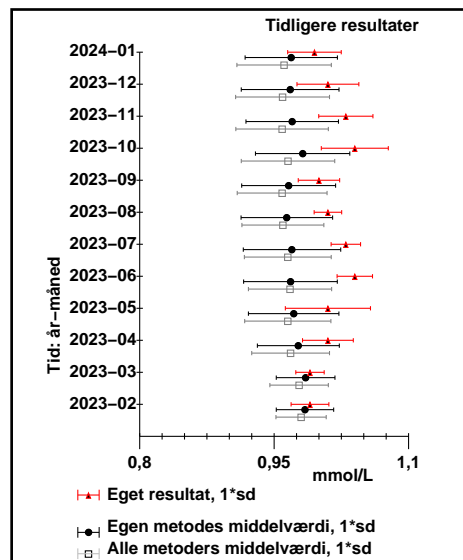
Metode	Gennemsnit	Standarddeviation	Antal lab.	egen middelværdi	egen VK%	eget antal
Alle metoder:	2,70	0,053	19	2,72	2,76	
Turbidimetri	2,70	0,05	11			
Immunturbidimetri	2,66	0,025	6			
Nefelometri	2,78	0,05	2			



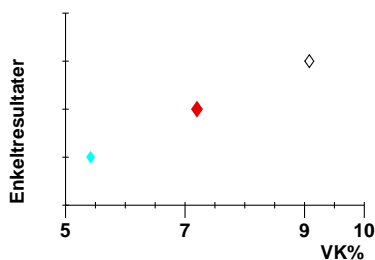
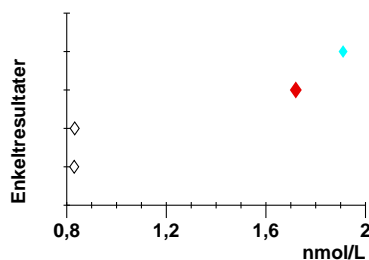
Triglycerid; stofk.; mmol/L
egen metode: G-3-P/H2O2, fotometri



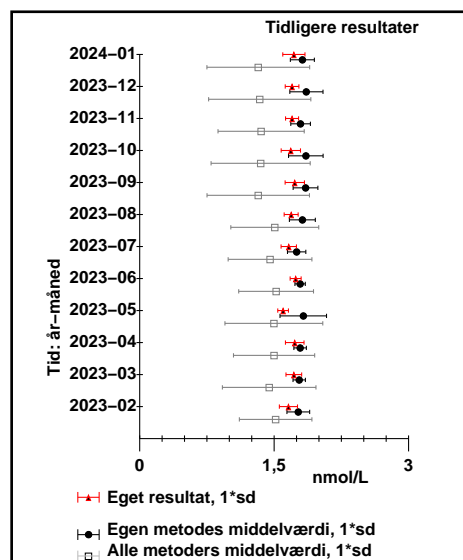
Metode	Gennemsnit	Standarddeviation	Antal lab.	egen middelværdi
Alle metoder:	0,96	0,053	22	0,995
G-3-P/H2O2, fotometri	0,97	0,05	16	egen VK%: 3
Enzymatisk fotometri	0,94	0,05	6	eget antal: 31



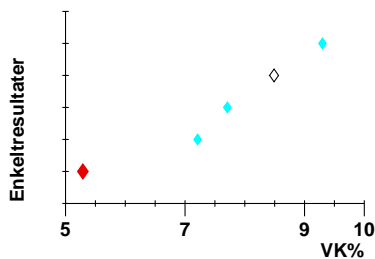
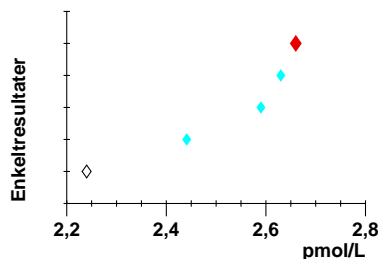
Triiodthyronin(T3); stofk.; nmol/L
egen metode: Chemiluminescens immunoassay



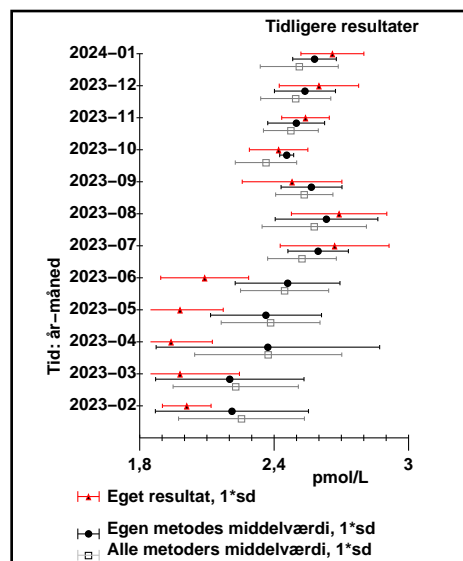
Metode	Gennemsnit	Standarddeviation	Antal lab.	egen middelværdi
Alle metoder:	1,3	0,6	4	1,72
Chemiluminescens immunoassay	1,8	0,13	2	egen VK%: 7,2
Chemiluminescens immunoassay	0,83		1	eget antal: 21
Elektrokemiluminescens immunoassay	0,832		1	



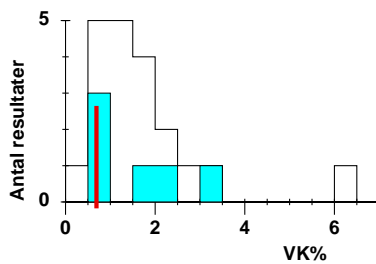
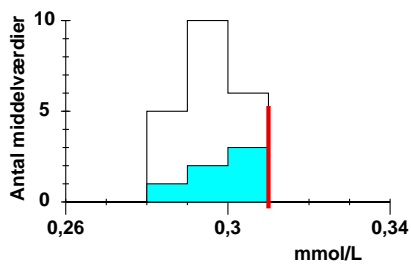
Triiodthyronin(frit)(Frit T3); stofk.; pmol/L
egen metode: Chemiluminescens immunoassay



Metode	Gennemsnit	Standarddeviation	Antal lab.	egen middelværdi
Alle metoder:	2,51	0,17	5	2,66
Chemiluminescens immunoassay	2,58	0,10	4	egen VK%: 5,29
Elektrokemiluminescens immunoassay	2,24		1	eget antal: 8



Urat; stofk.; mmol/L
egen metode: Allantoin, fotometri

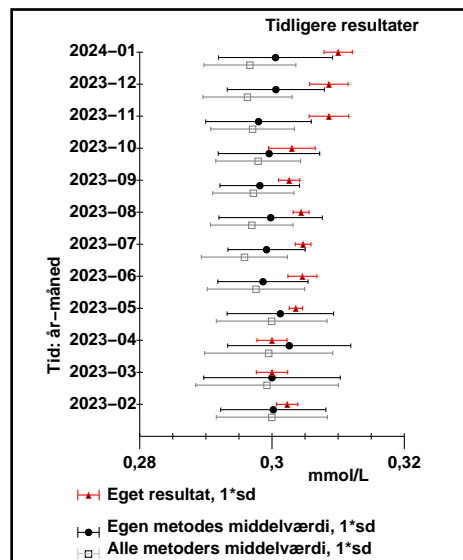


Metode

Alle metoder:
Allantoin, fotometri
H2O2 Peroxidase, fotometri
Enzymatisk fotometri

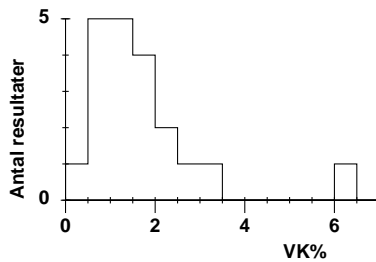
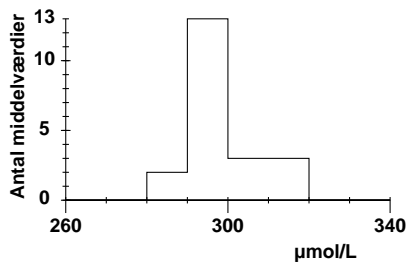
Gennemsnit	Standarddeviation	Antal lab.
0,297	0,007	21
0,301	0,009	6
0,295	0,007	10
0,296	0,003	5

egen middelværdi: 0,31
egen VK%: 0,69
eget antal: 15



© DEKS 2024-01 82a

Urat; stofk.; µmol/L
egen metode: Ukendt

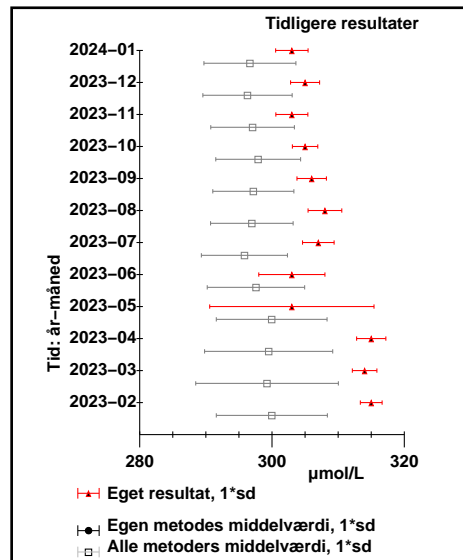


Metode

Alle metoder:
Allantoin, fotometri
H2O2 Peroxidase, fotometri
Enzymatisk fotometri

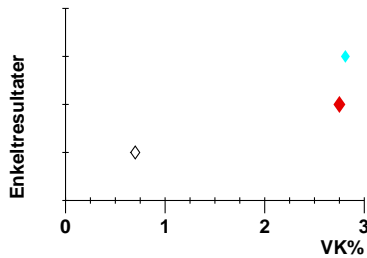
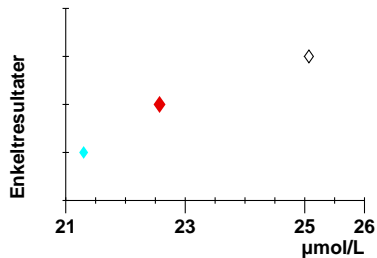
Gennemsnit	Standarddeviation	Antal lab.
297	7	21
301	9	6
295	7	10
296	3	5

egen middelværdi: 0,31
egen VK%: 0,69
eget antal: 15



© DEKS 2024-01 82b

Zink; stofk.; µmol/L
egen metode: Fotometri

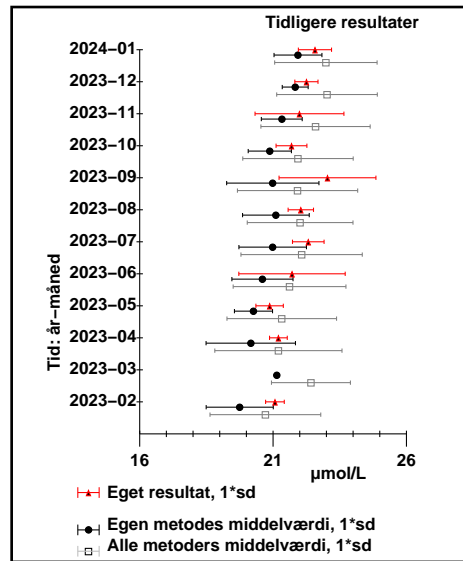


Metode

Alle metoder:
Fotometri
ICP-massespektrofotometri

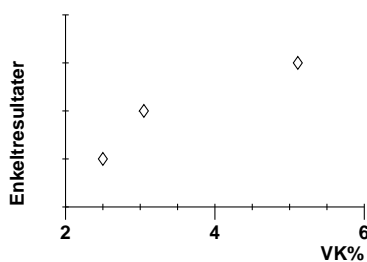
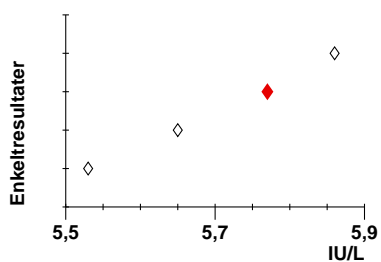
Gennemsnit	Standarddeviation	Antal lab.
23	1,9	3
21,9	0,9	2
25,07		1

egen middelværdi: 22,57
egen VK%: 2,75
eget antal: 21

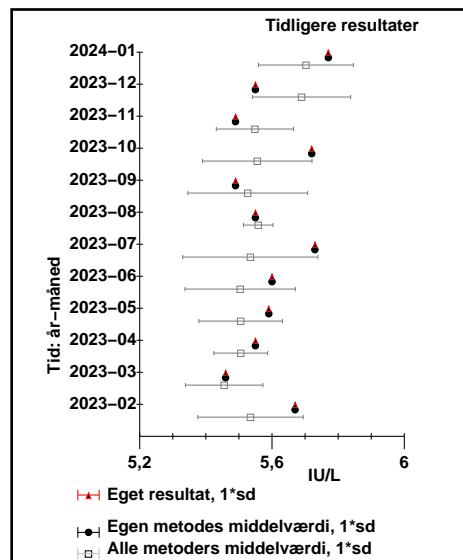


© DEKS 2024-01 84

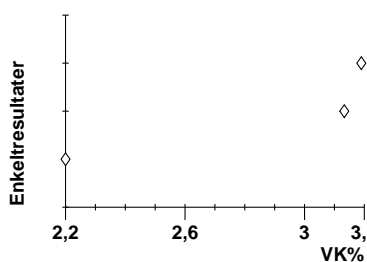
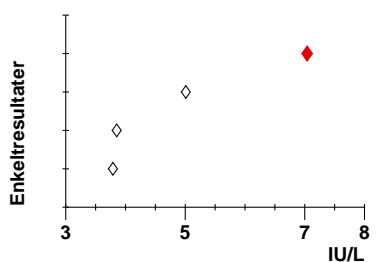
Follitropin(Follikel stimulerende hormon (FSH)); arb.stofk.; IU/L egen metode: Elektrokemiluminescens immunoassay



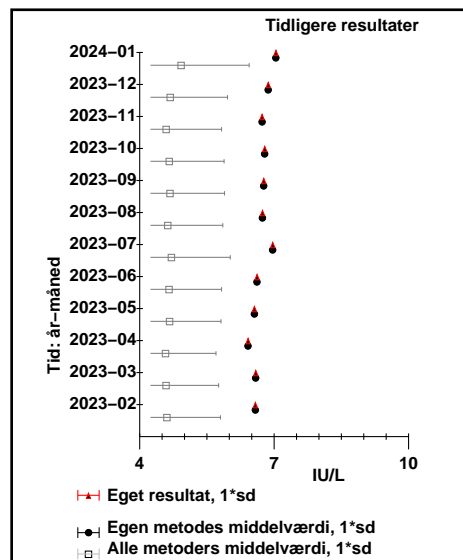
Metode	Gennemsnit	Standarddeviation	Antal lab.	egen middelværdi
Alle metoder:	5,70	0,14	4	5,77
Elektrokemiluminescens immunoassay	5,77		1	egen VK%: 1
Chemiluminescens immunoassay	5,8	0,15	2	
Sandwich-immunoassay med fluorescence-detektion	5,53		1	



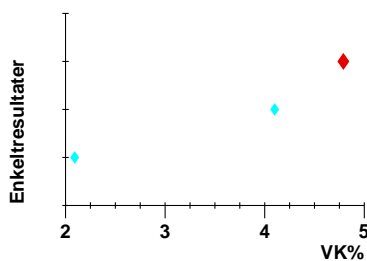
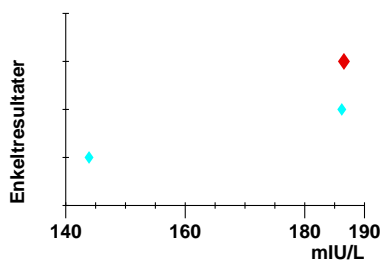
Lutropin(Luteiniserende hormon (LH)); arb.stofk.; IU/L egen metode: Elektrokemiluminescens immunoassay



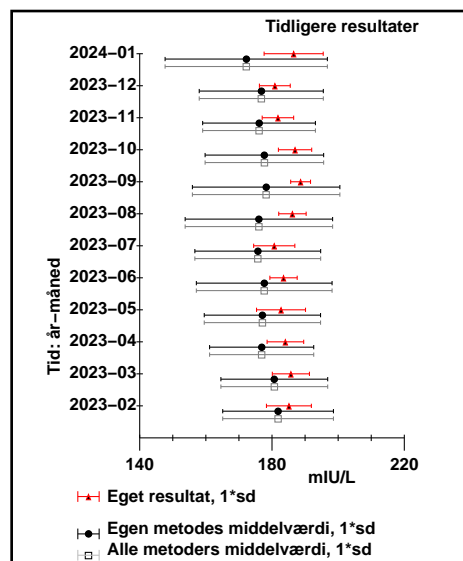
Metode	Gennemsnit	Standarddeviation	Antal lab.	egen middelværdi
Alle metoder:	4,9	1,5	4	7,04
Elektrokemiluminescens immunoassay	7,04		1	egen VK%: 1
Chemiluminescens immunoassay	3,82	0,04	2	
Sandwich-immunoassay med fluorescence-detektion	5,01		1	



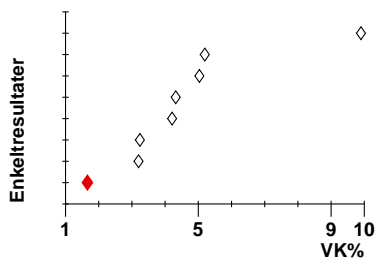
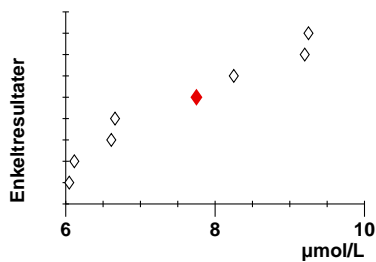
Prolactin; arb.stofk.; mIU/L egen metode: Chemiluminescens immunassay



Metode	Gennemsnit	Standarddeviation	Antal lab.	egen middelværdi
Alle metoder:	170	20	3	186,56
Chemiluminescens immunassay	170	20	3	egen VK%: 4,79



Homocystein; stofk.; $\mu\text{mol/L}$ egen metode: LC-MS-MS



Metode

Alle metoder:
LC-MS-MS

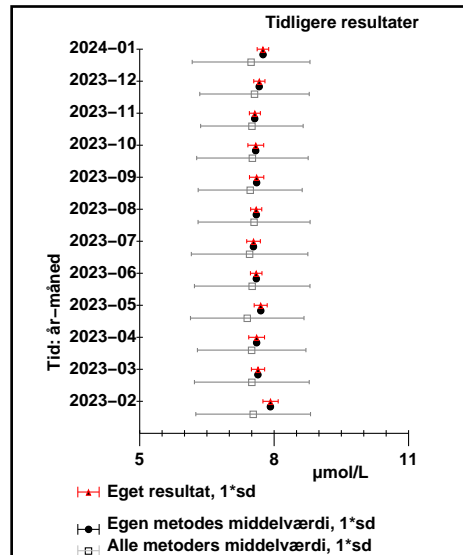
Chemiluminescens immunoassay

Enzymatisk fotometri

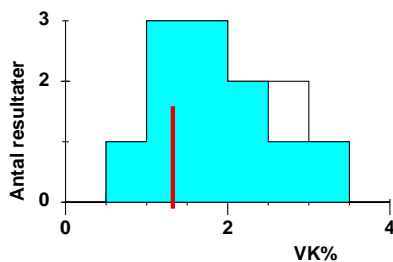
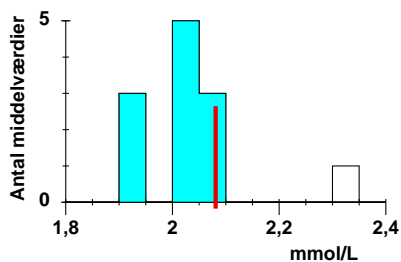
Nefelometri

Gennemsnit	Standarddeviation	Antal lab.
7,5	1,3	8
7,75		1
6,4	0,3	4
9,22	0,04	2
8,25		1

egen middelværdi: 7,75
egen VK%: 1,66
eget antal: 32



Cholesterol+ester, i LDL; stofk.; mmol/L egen metode: Direkte LDL-måling



Metode

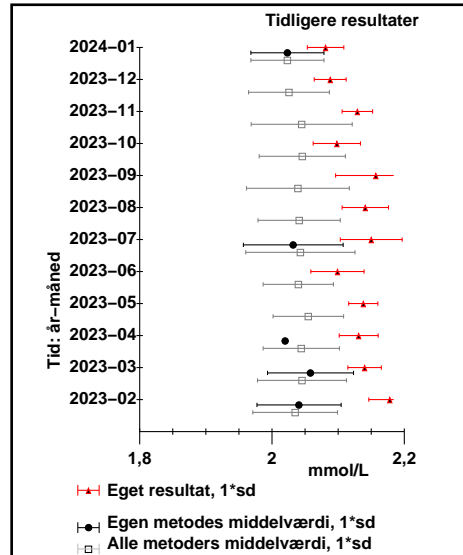
Alle metoder:

Direkte LDL-måling

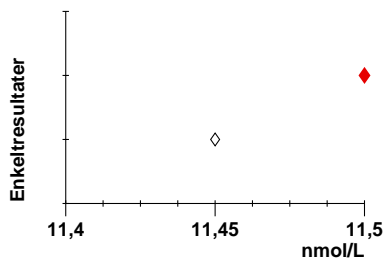
Beregning (Friedewald)

Gennemsnit	Standarddeviation	Antal lab.
2,05	0,10	12
2,02	0,06	11
2,33		1

egen middelværdi: 2,081
egen VK%: 1,324
eget antal: 113



Testosteron; stofk.; nmol/L egen metode: Elektrokemiluminescens immunoassay



Metode

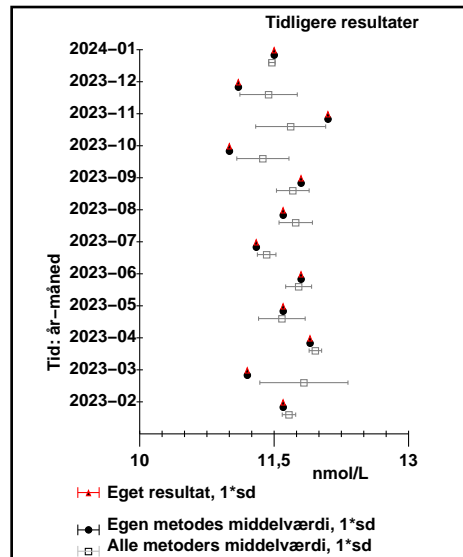
Alle metoder:

Elektrokemiluminescens immunoassay

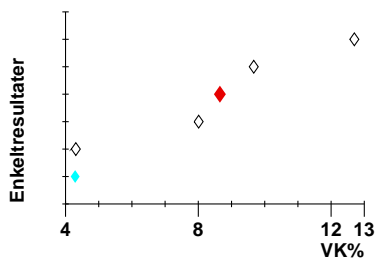
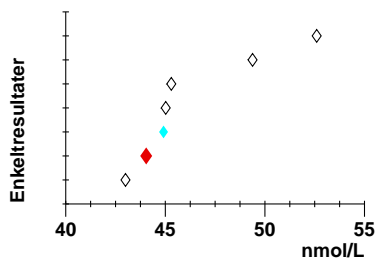
Chemiluminescens immunoassay

Gennemsnit	Standarddeviation	Antal lab.
11,47	0,04	2
11,5		1
11,45		1

egen middelværdi: 11,5
egen VK%: 1
eget antal: 1



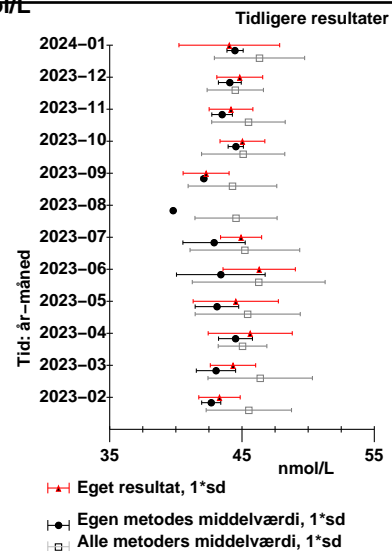
Calcifediol+25-Hydroxyergocalciferol(25-Hydroxy-Vitamin D3; stofk.; nmol/L)
egen metode: Chemiluminiscens



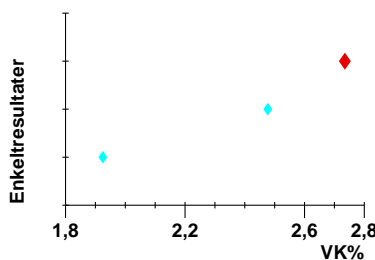
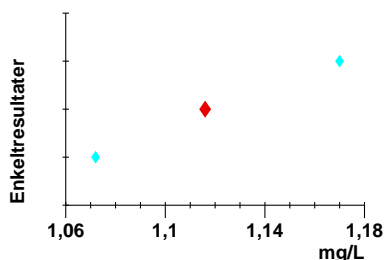
Metode

Alle metoder:
Chemiluminiscens
Elektrokemiluminescens
Chemiluminiscens immunoassay

Gennemsnit	Standarddeviation	Antal lab.	egen middelværdi
46	3	7	44,04
44,5	0,6	2	egen VK%: 8,65
49	4	3	eget antal: 28
44	1,4	2	



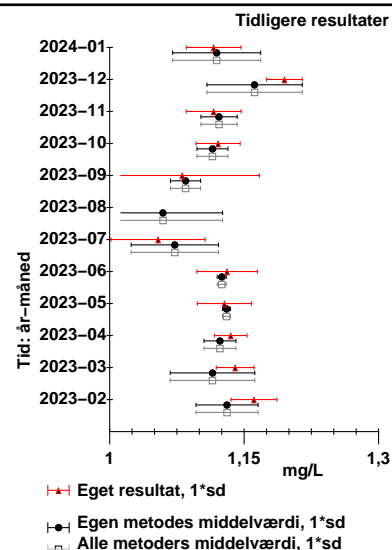
Cystatin C; massek.; mg/L
egen metode: Turbidimetri



Metode

Alle metoder:
Turbidimetri

Gennemsnit	Standarddeviation	Antal lab.	egen middelværdi
1,12	0,05	3	egen middelværdi: 1,116
1,12	0,05	3	egen VK%: 2,735
			eget antal: 87

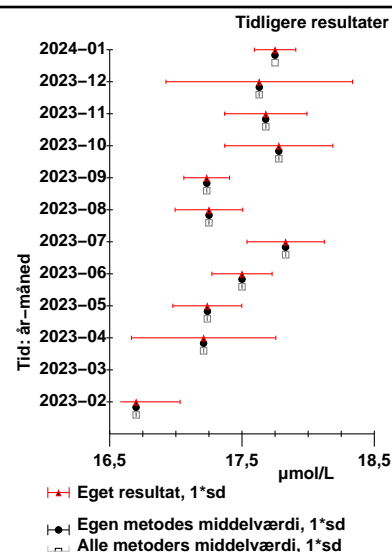


Kobber; stofk.; µmol/L
egen metode: ICP-massespektrofotometri

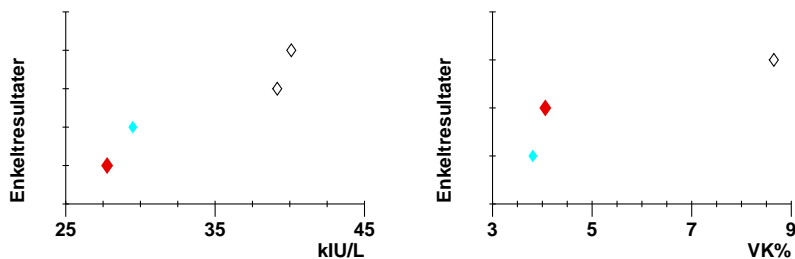
Metode

Alle metoder:
ICP-massespektrofotometri

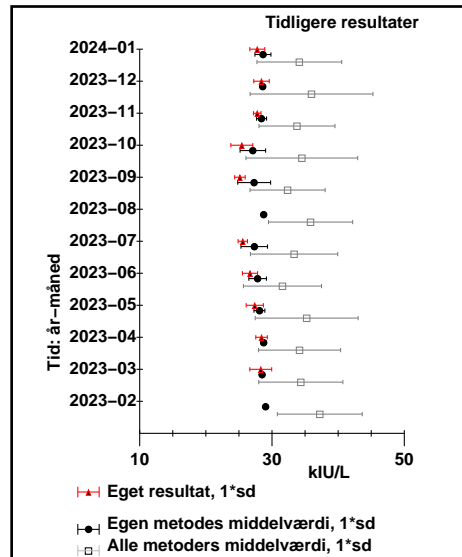
Gennemsnit	Standarddeviation	Antal lab.	egen middelværdi
17,75		1	egen middelværdi: 17,75
17,75		1	egen VK%: 0,88
			eget antal: 2



Thyroid-peroxidase-antistof(Anti-TPO); arb.k.; kIU/L egen metode: Chemiluminescens immunoassay

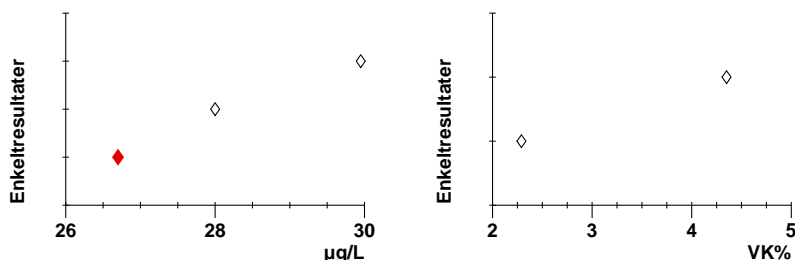


Metode	Gennemsnit	Standarddeviation	Antal lab.	egen middelværdi
Alle metoder:	34	6	4	27,77
Chemiluminescens immunoassay	28,6	1,2	2	egen VK%: 4,06
Elektrokemiluminescens immunoassay	39,6	0,7	2	eget antal: 24

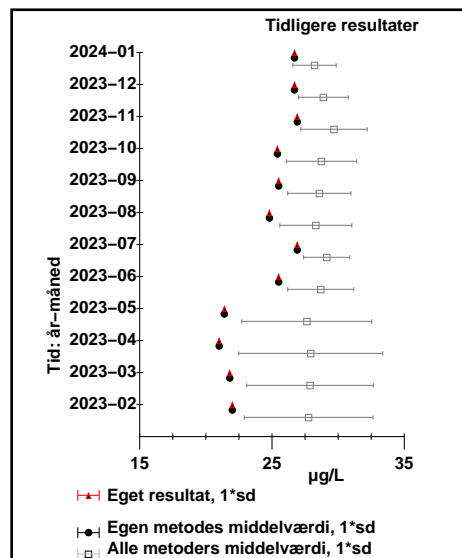


© DEKS 2024-01 205

Myoglobin; massek.; µg/L egen metode: Elektrokemiluminescens immunoassay



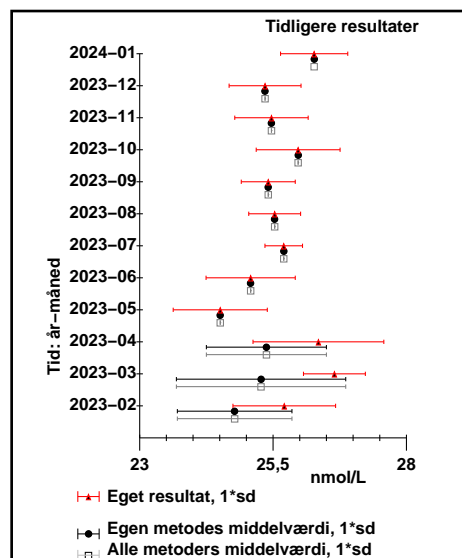
Metode	Gennemsnit	Standarddeviation	Antal lab.	egen middelværdi
Alle metoder:	28	1,6	3	26,7
Elektrokemiluminescens immunoassay	26,7	1	1	egen VK%: 1
Chemiluminescens immunoassay	29	1,4	2	



© DEKS 2024-01 206

Lipoprotein Lp(a); stofk.; nmol/L egen metode: Fotometri

Metode	Gennemsnit	Standarddeviation	Antal lab.	egen middelværdi
Alle metoder:	26,27		1	26,27
Fotometri	26,27		1	egen VK%: 2,4

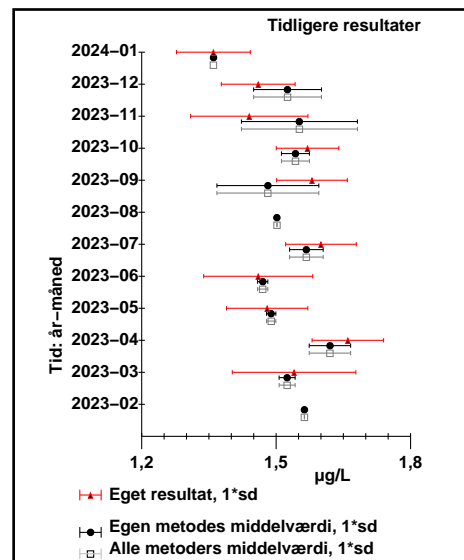


© DEKS 2024-01 208

Creatinkinase MB(CKMB); massek.; µg/L
egen metode: Chemiluminiscens immunoassay

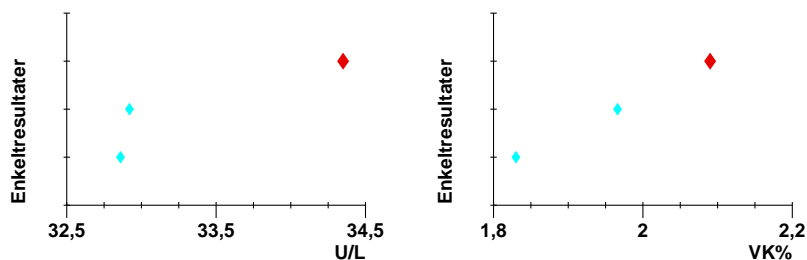
Metode	Gennemsnit	Standarddeviation	Antal lab.	egen middelværdi
Alle metoder:	1,36		1	1,36
Chemiluminiscens immunoassay	1,36		1	1,36

egen middelværdi: 1,36
egen VK%: 6,05
eget antal: 30



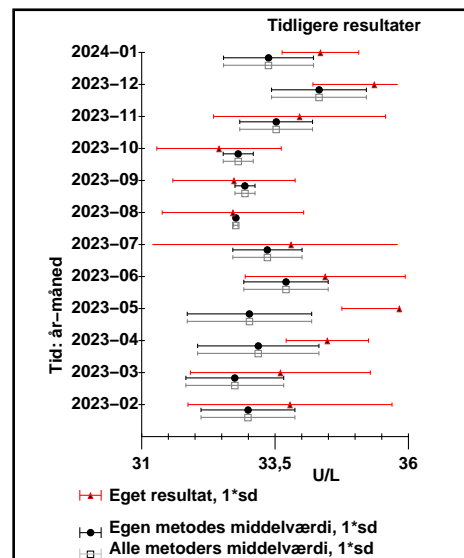
© DEKS 2024-01 211

Lipase; kat.k.; U/L
egen metode: Enzymatisk fotometri



Metode	Gennemsnit	Standarddeviation	Antal lab.	egen middelværdi
Alle metoder:	33,4	0,8	3	34,35
Enzymatisk fotometri	33,4	0,8	3	34,35

egen middelværdi: 34,35
egen VK%: 2,09
eget antal: 57

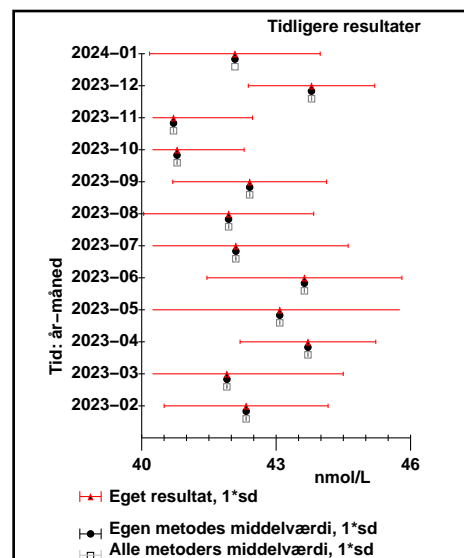


© DEKS 2024-01 278

Sexualhormonbindende globulin(SHBG); stofk.; nmol/L
egen metode: Chemiluminiscens immunoassay

Metode	Gennemsnit	Standarddeviation	Antal lab.	egen middelværdi
Alle metoder:	42,08		1	42,08
Chemiluminiscens immunoassay	42,08		1	42,08

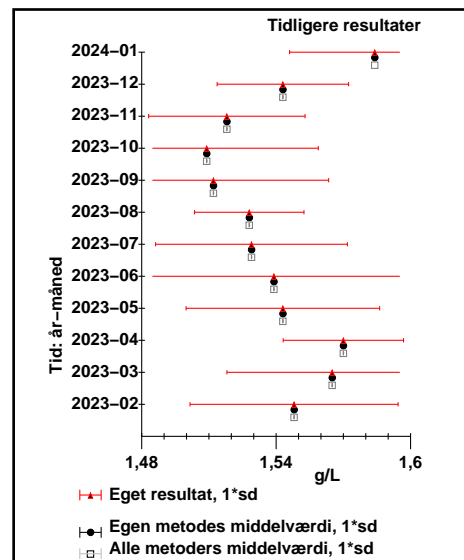
egen middelværdi: 42,08
egen VK%: 4,524
eget antal: 26



© DEKS 2024-01 301

ApoA1; massek.; g/L
egen metode: Nefelometri

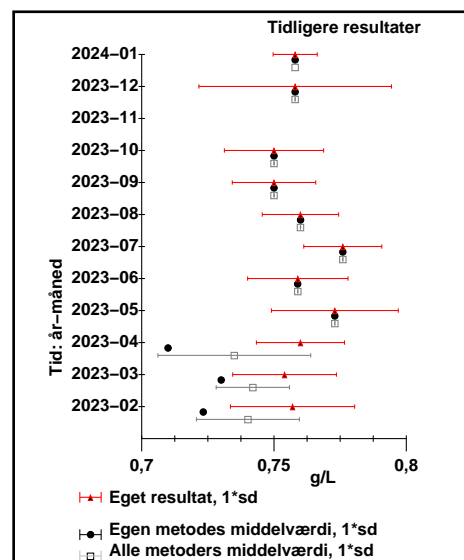
Metode	Gennemsnit	Standarddeviation	Antal lab.	egen middelværdi	egen VK%	eget antal
Alle metoder:	1,584		1	1,584	2,4	5
Nefelometri	1,584		1			



© DEKS 2024-01 302

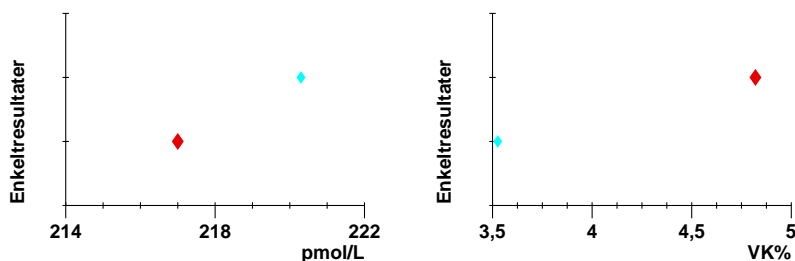
ApoB; massek.; g/L
egen metode: Nefelometri

Metode	Gennemsnit	Standarddeviation	Antal lab.	egen middelværdi	egen VK%	eget antal
Alle metoder:	0,758		1	0,758	1,1	5
Nefelometri	0,758		1			

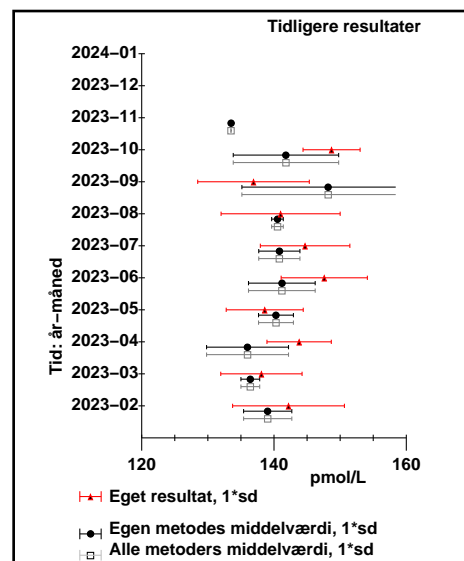


© DEKS 2024-01 303

Holo-Transcobalamin II(Aktiv B12, Holo TC); ikke relev; pmol/L
egen metode: Chemilumiscens immunoassay

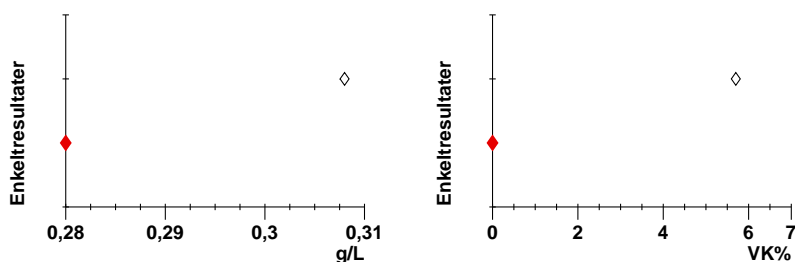


Metode	Gennemsnit	Standarddeviation	Antal lab.	egen middelværdi	egen VK%	eget antal
Alle metoder:	219	2	2	217	4,82	37
Chemilumiscens immunoassay	219	2	2			

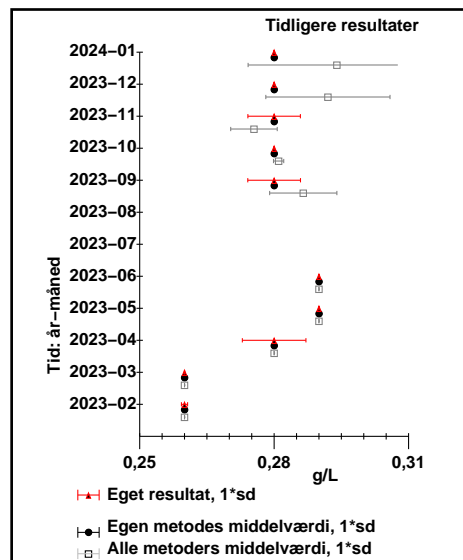


© DEKS 2024-01 304

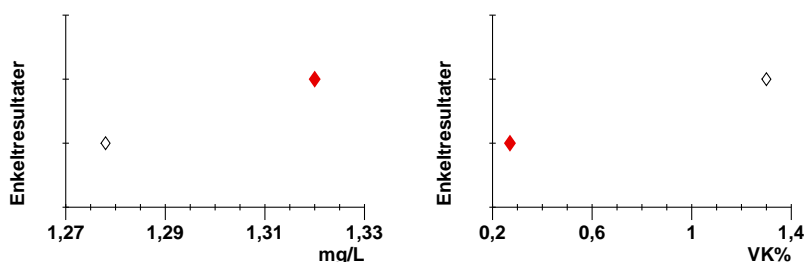
Transthyretin(Præalbumin); massek.; g/L
egen metode: Immunturbidimetri



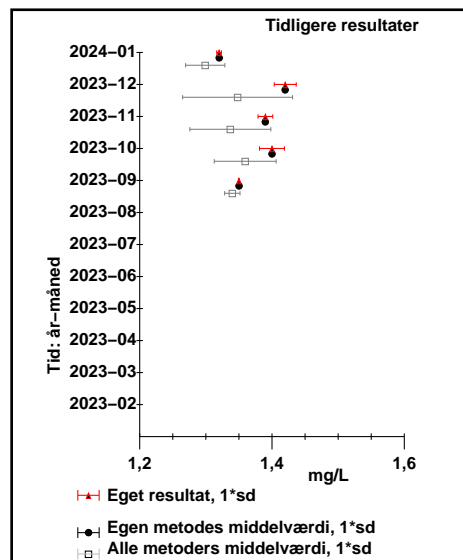
Metode	Gennemsnit	Standarddeviation	Antal lab.	egen middelværdi
Alle metoder:	0,29	0,02	2	0,28
Immunturbidimetri	0,28		1	0
Nefelometri	0,308		1	2



Beta-2-Microglobulin; massek.; mg/L
egen metode: Immunturbidimetri

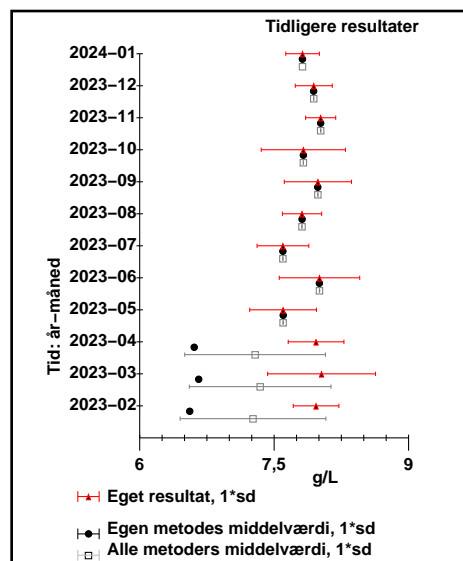


Metode	Gennemsnit	Standarddeviation	Antal lab.	egen middelværdi
Alle metoder:	1,30	0,03	2	1,32
Immunturbidimetri	1,32		1	0,27
Nefelometri	1,278		1	2



Immunoglobulin G1; massek.; g/L
egen metode: Nefelometri

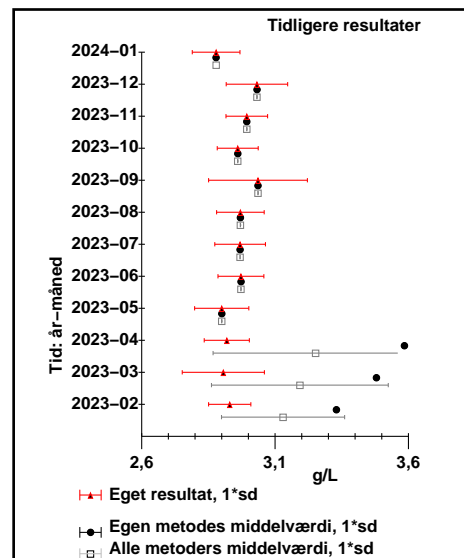
Metode	Gennemsnit	Standarddeviation	Antal lab.	egen middelværdi
Alle metoder:	7,817		1	7,817
Nefelometri	7,817		1	2,4



Immunoglobulin G2; massek.; g/L
egen metode: Nefelometri

Metode	Gennemsnit	Standarddeviation	Antal lab.	egen middelværdi
Alle metoder:	2,879		1	2,879
Nefelometri	2,879		1	2,879

egen middelværdi: 2,879
egen VK%: 3,1
eget antal: 13

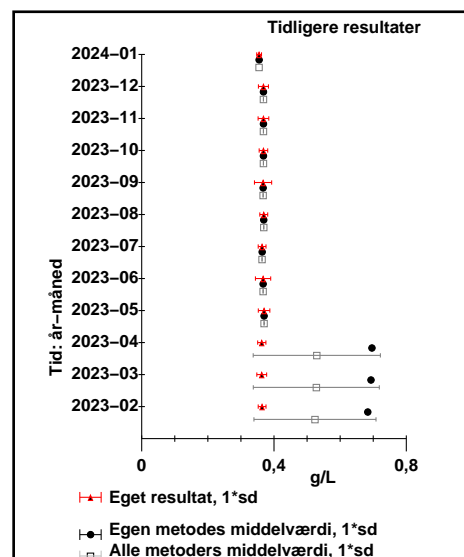


© DEKS 2024-01 308

Immunoglobulin G3; massek.; g/L
egen metode: Nefelometri

Metode	Gennemsnit	Standarddeviation	Antal lab.	egen middelværdi
Alle metoder:	0,355		1	0,355
Nefelometri	0,355		1	0,355

egen middelværdi: 0,355
egen VK%: 2
eget antal: 12

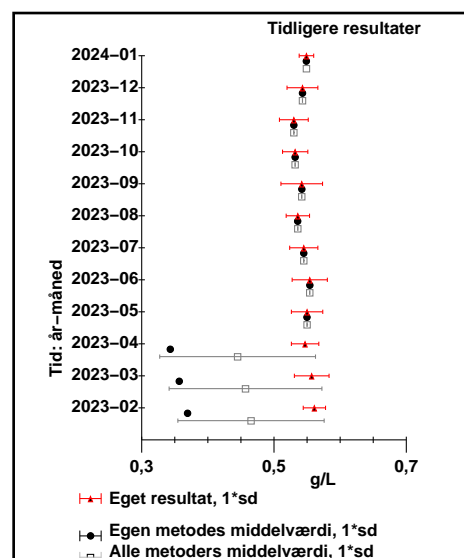


© DEKS 2024-01 309

Immunoglobulin G4; massek.; g/L
egen metode: Nefelometri

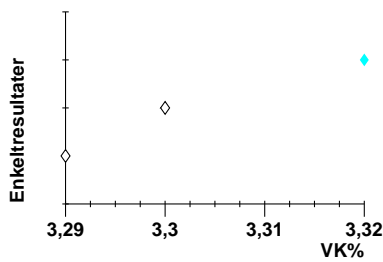
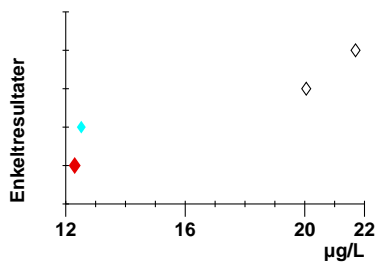
Metode	Gennemsnit	Standarddeviation	Antal lab.	egen middelværdi
Alle metoder:	0,549		1	0,549
Nefelometri	0,549		1	0,549

egen middelværdi: 0,549
egen VK%: 2
eget antal: 12

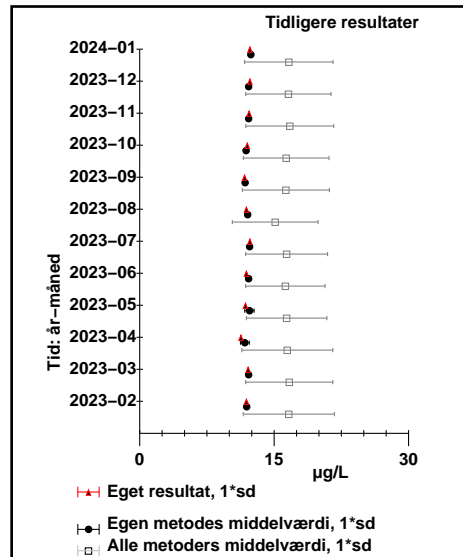


© DEKS 2024-01 310

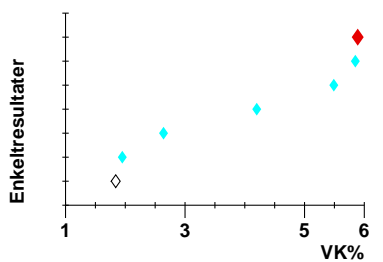
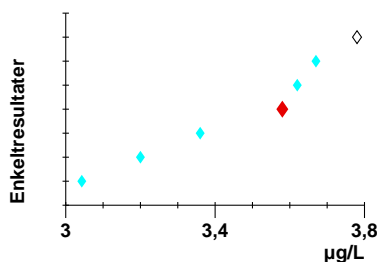
Carcinoembryonalt antigen(CEA) (HK19 Special); massek.; µg/L
egen metode: Elektrokemiluminescens immunoassay



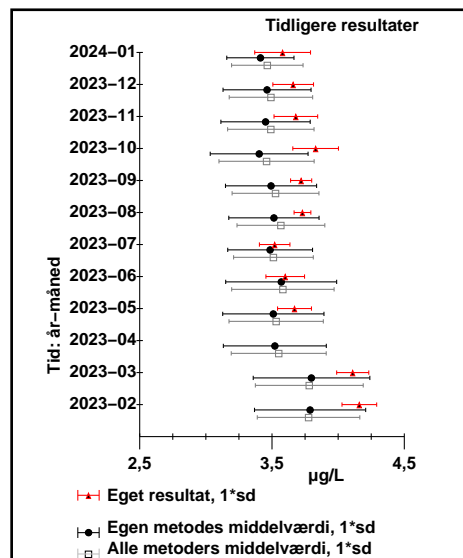
Metode	Gennemsnit	Standarddeviation	Antal lab.	egen middelværdi
Alle metoder:	17	5	4	12,3
Elektrokemiluminescens immunoassay	12,4	0,16	2	egen VK%: 1
Chemiluminescens immunoassay	20,9	1,2	2	eget antal: 1



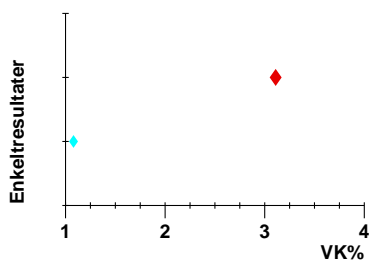
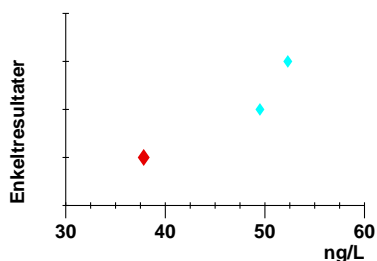
Prostata-specifikt antigen(Total) (HK19 Special); massek.; µg/L
egen metode: Chemiluminescens immunoassay



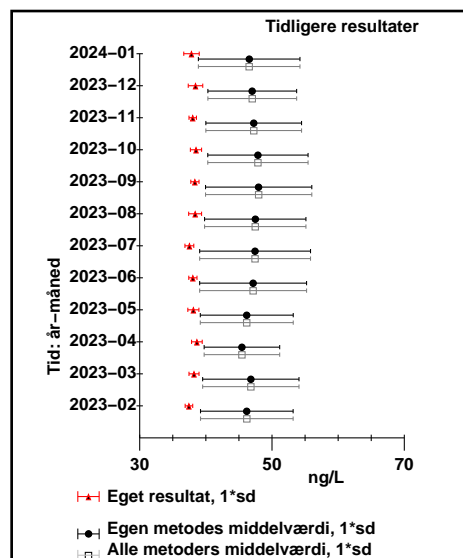
Metode	Gennemsnit	Standarddeviation	Antal lab.	egen middelværdi
Alle metoder:	3,5	0,27	7	3,58
Chemiluminescens immunoassay	3,4	0,25	6	egen VK%: 5,89
Elektrokemiluminescens immunoassay	3,78	0,25	1	eget antal: 10



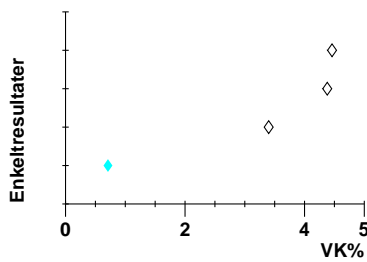
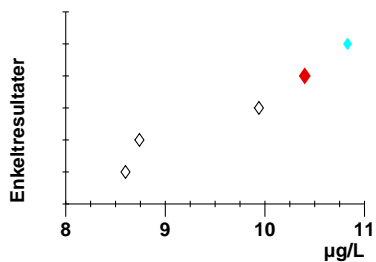
Troponin T, hjertemuskel (HK19 Special); massek.; ng/L
egen metode: Elektrokemiluminescens immunoassay



Metode	Gennemsnit	Standarddeviation	Antal lab.	egen middelværdi
Alle metoder:	47	8	3	37,83
Elektrokemiluminescens immunoassay	47	8	3	egen VK%: 3,11
				eget antal: 19



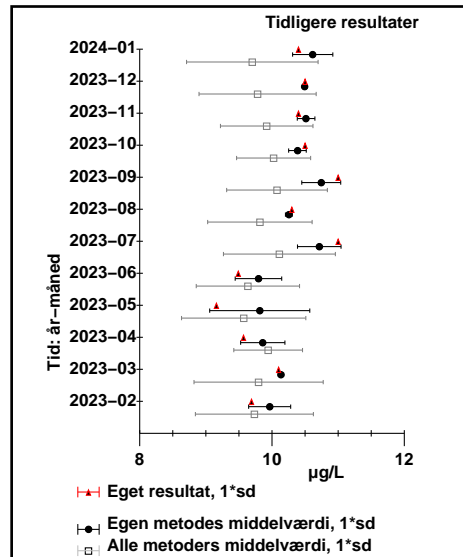
Creatinkinase MB(CKMB) (HK19 Special); massek.; µg/L
egen metode: Elektrokemiluminescens immunoassay



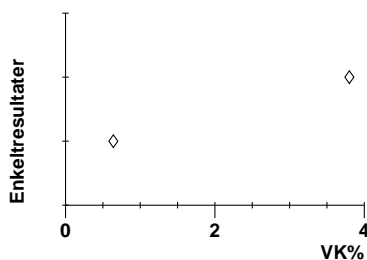
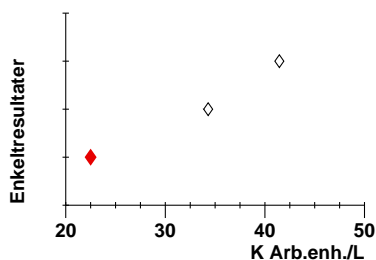
Metode

Alle metoder:
Elektrokemiluminescens immunoassay
Chemiluminescens immunoassay
Sandwich-immunoassay

Gennemsnit	Standarddeviation	Antal lab.	egen middelværdi
9,7	1,0	5	10,4
10,6	0,3	2	egen VK%: 1
8,67	0,10	2	
9,94		1	



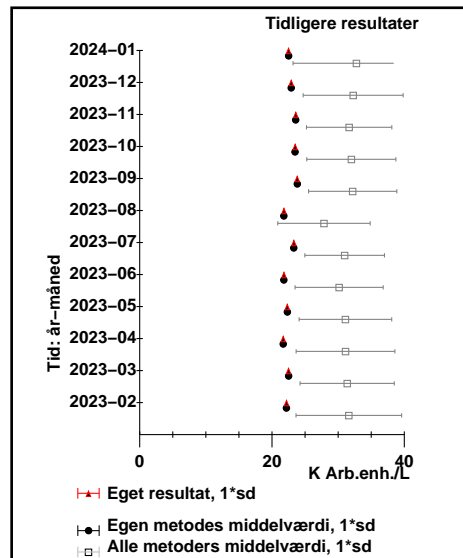
Cancer-antigen 125 (HK19 Special); arb.stofk.; K Arb.enh./L
egen metode: Elektrokemiluminescens immunoassay



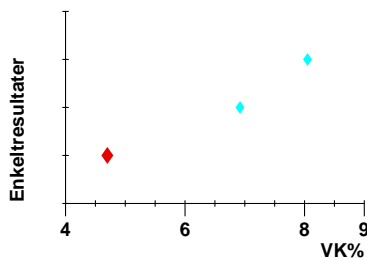
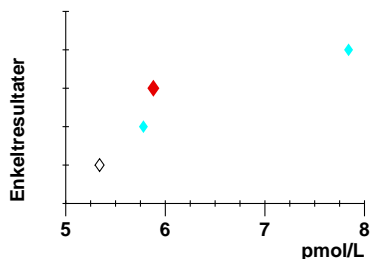
Metode

Alle metoder:
Elektrokemiluminescens immunoassay
Chemiluminescens immunoassay

Gennemsnit	Standarddeviation	Antal lab.	egen middelværdi
33	10	3	22,5
22,5		1	egen VK%: 1
38	5	2	



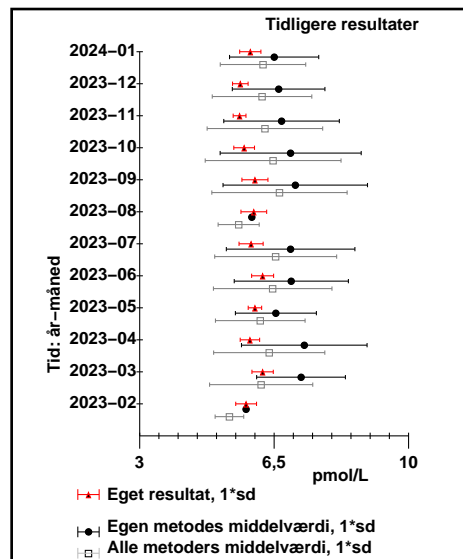
Parathyrin(Parathyroideahormon (PTH)) (HK19 Special); arb.stofk.; pmol/L
egen metode: Chemiluminescens immunoassay



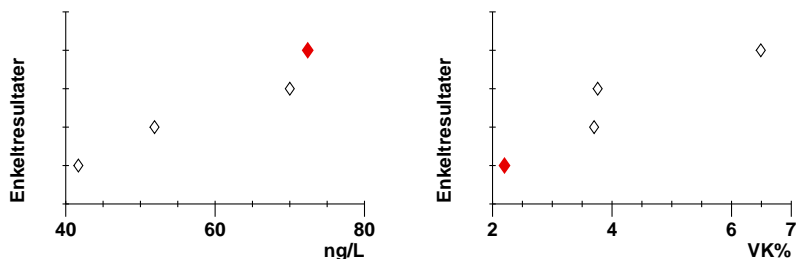
Metode

Alle metoder:
Chemiluminescens immunoassay
Elektrokemiluminescens immunoassay

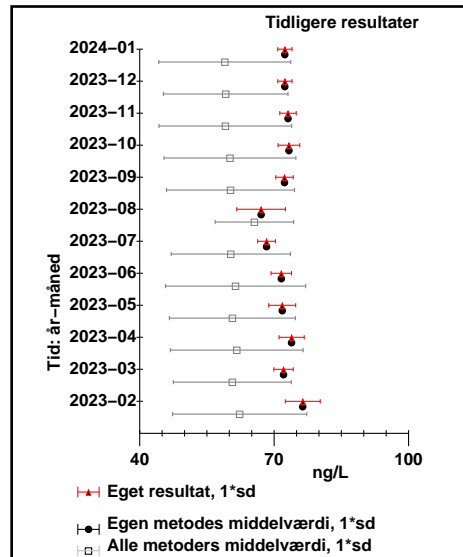
Gennemsnit	Standarddeviation	Antal lab.	egen middelværdi
6,2	1,1	4	5,88
6,5	1,2	3	egen VK%: 4,7
5,34		1	eget antal: 18



Troponin I, hjertemuskel (HK19 Special); massek.; ng/L
egen metode: Luminescens immunassay

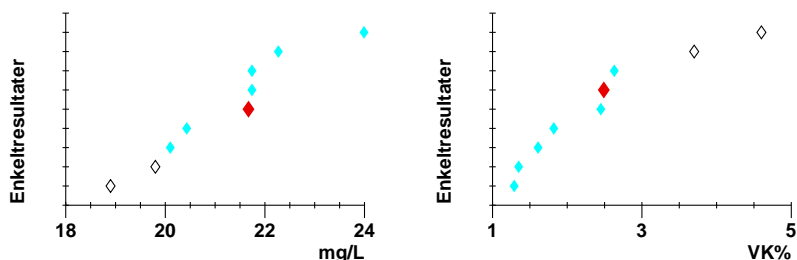


Metode	Gennemsnit	Standarddeviation	Antal lab.	egen middelværdi
Alle metoder:	59	15	4	72,4
Luminescens immunassay	72,4		1	egen VK%: 2,2
Chemiluminescens immunoassay	55	14	3	eget antal: 9

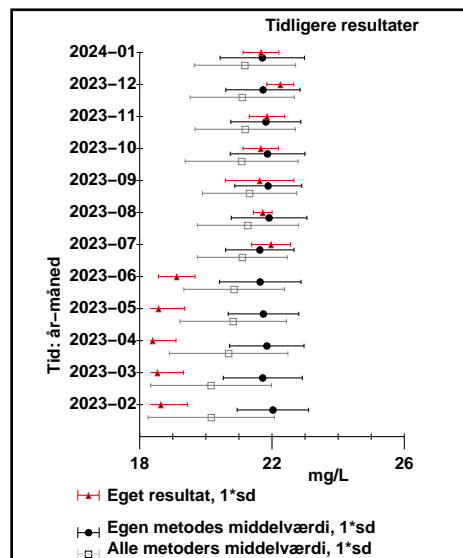


© DEKS 2024-01 317

C-reaktivt protein(CRP) (HK19 Special); massek.; mg/L
egen metode: Turbidimetri

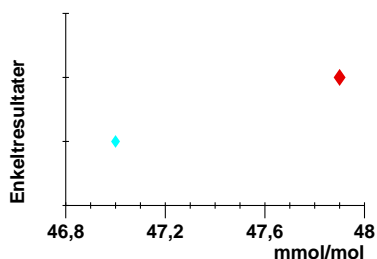


Metode	Gennemsnit	Standarddeviation	Antal lab.	egen middelværdi
Alle metoder:	21,2	1,5	9	21,67
Turbidimetri	21,7	1,3	7	egen VK%: 2,49
Nefelometri	19,4	0,6	2	eget antal: 8

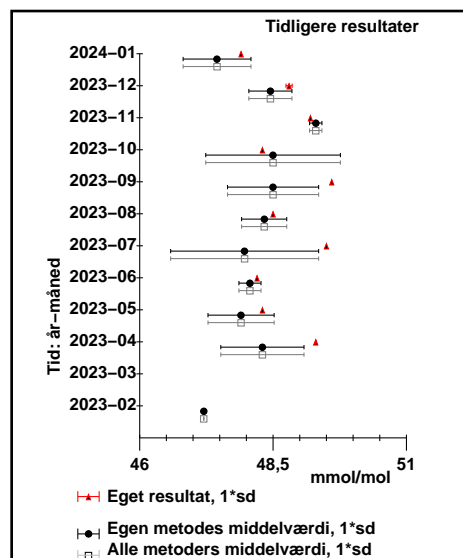


© DEKS 2024-01 318

Hæmoglobin A1c;Hb(HbA1c); stoffr.; mmol/mol
egen metode: HPLC

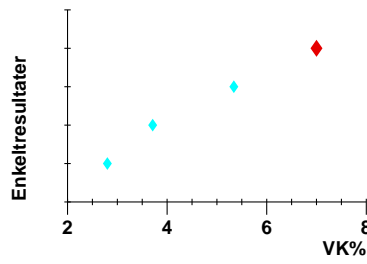
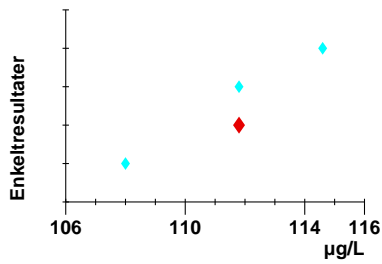


Metode	Gennemsnit	Standarddeviation	Antal lab.	egen middelværdi
Alle metoder:	47,5	0,6	2	47,9
HPLC	47,5	0,6	2	egen VK%: 1



© DEKS 2024-01 319

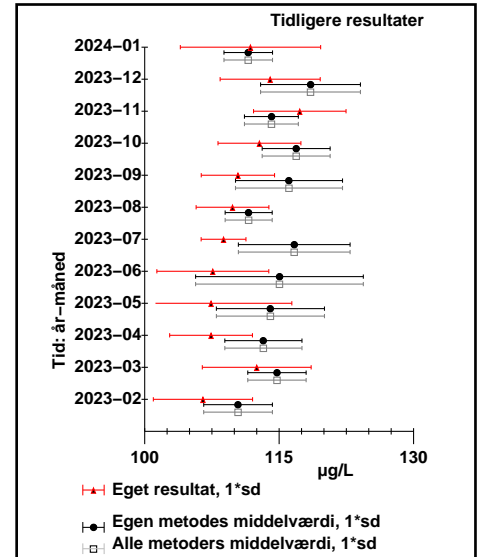
Hæmoglobin(Fe)(Blod i fæces) (HK19 F-Hb); stofk.; µg/L
egen metode: Flourescens immunoassay



Metode

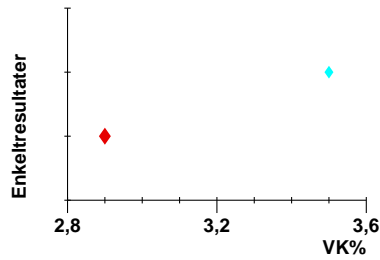
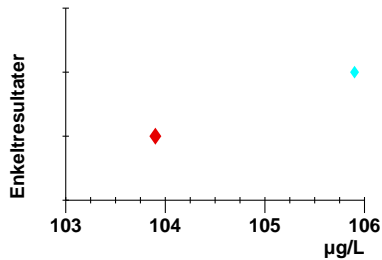
Alle metoder:
Flourescens immunoassay

Gennemsnit	Standard deviation	Antal lab.	egen middelværdi
112	3	4	111,8
112	3	4	egen VK%: 7
			eget antal: 10



© DEKS 2024-01 320

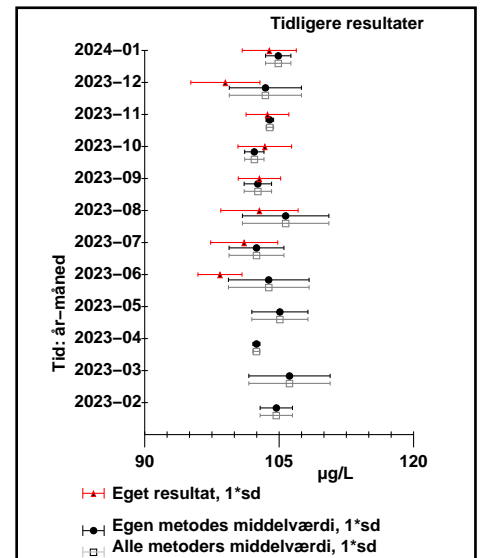
Hæmoglobin(Fe)(Blod i fæces) (HK22 F-Hb); stofk.; µg/L
egen metode: Flourescens immunoassay



Metode

Alle metoder:
Flourescens immunoassay

Gennemsnit	Standard deviation	Antal lab.	egen middelværdi
105	1,4	2	103,9
105	1,4	2	egen VK%: 2,9
			eget antal: 57



© DEKS 2024-01 321